

# Merchant range guide



# Contents

## MARLEY RAINWATER ● 4

### Rainwater systems

Deepflow & Clip-master	6
Circular downpipe 68mm	7-8
Flowline	8
Square downpipe 65mm	9
Regency	10-11
Deepflow 150	12
Circular downpipe 82mm	12
Foundry Finish, Cast iron effect	13-14
Highflo	14
Circular downpipe 110mm	15
Stormflo	16
Circular downpipe 160mm	17
Ancillary items	18-19
Hopper heads & PVCu roof outlets	20

## MARLEY PVC SOIL & WASTE ● 22

### Soil & Waste systems

#### Waste

Solvent waste PVC-c / PVCu	23-24
Solvent waste ABS	25-26
Push-fit waste polypropylene	27
PVCu vent and overflow system	28
Accessories	29

#### Soil

Push fit soil	30-32
Solvent soil	33-35
Rigid WC connectors, WC Manifolds, PVCu floor outlets & pipe support	36-37
Accessories	37-38
Foundry Finish	39

## MULTIKWIK ● 40

### Plumbing

Traps	42-45
Compression waste/pipes & fittings	46
WC connectors/modern	47-48
WC connectors/old	49
WC connectors/stainless steel	50
Floor drainage/Linum/ Shower gullies	51-52
Spares and replacements	53

## STUDOR ● 54

### Two-way vent for septic tanks, water tanks and silos

Maxi-Filtra & Accessories	56
---------------------------	----



## MARLEY UNDERGROUND ● 58

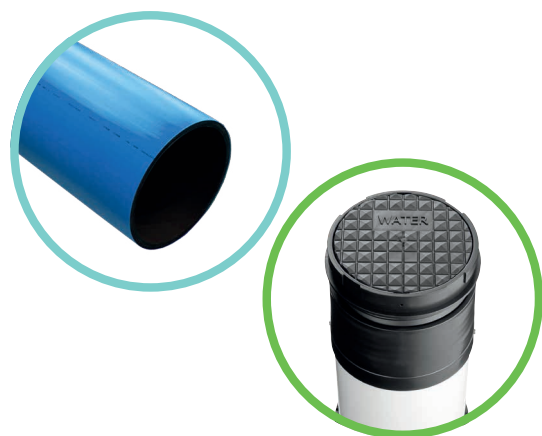
Underground drainage	
Solid wall drainage systems	60-65
Inspection chamber systems	65-67

## QUANTUM ● 68

Twin-wall drainage	
Structured wall drainage systems	70-71
Large diameter Quantum highway & Accessories	72-73

## FLOWLOC ● 74

Vortex flow control device	
Flowloc control device	76



## PHILMAC ● 78

Fittings & valves for safe transfer, control & application of water	
Compression fittings 3G	80-82
Liners & connection kits 3G	83
Compression fittings UTC	84
UTC Connectors guide	85
Large bore PE metric fittings	86
Stopcock & valves	87
BSP Threaded fittings	88-89
Accessories	89

## GPS ● 90

Pipe for potable water applications	
PE Blue, PE 3 <sup>C</sup> & 3 <sup>TH</sup> , PE Black	92-93

## ADJUSTA™ ● 94

Load bearing, adjustable boundary box	
Contaminated land/Rigid/Adjusta box	96
Accessories	97
Protecta-Line boundary box	98

## Get in touch!

Visit: [Aliaxis.co.uk/get-in-touch](http://Aliaxis.co.uk/get-in-touch)  
 Or call: +44 (0) 330 111 4233



# | Marley Rainwater



# Marley Rainwater

Deepflow - 110 x 75mm semi-elliptical system



4  
life

## GUTTER

Size	Colour	Qty	Part no.
3m	W B G BR AG	5	RGD3
4m	W B G BR AG	5	RGD4



## JOINT BRACKET

Colour	Qty	Part no.
W B G BR AG	20	RUD10

Adaptors to join different gutter profiles are available to order



## FASCIA BRACKET

Colour	Qty	Part no.
W B G BR AG	80	RKD1

When used with 2 hole screw fixings, brackets meet the heavy class of BS EN 1462



## ANGLE

Size	Colour	Qty	Part no.
90°	W B G BR AG	20	RAD10
45°	W B G BR AG	15	RAD20
Custom	W B G BR AG		RFB21

Special gutter angles are available to order  
Please state angle required



## RUNNING OUTLET - Circular spigot

Spigot size	Colour	Qty	Part no.
68mm	W B G BR AG	12	ROD10
82mm	W B G BR AG	12	ROD11



## STOPEND OUTLET - Circular spigot

Spigot size	Colour	Qty	Part no.
68mm	W B G BR AG	15	ROD20



## EXTERNAL STOPEND

Colour	Qty	Part no.
W B G BR AG	40	RED10



## NOTCH ADAPTOR

Colour	Qty	Part no.
B	20	RGNA1

To adapt fitting for notch jointing, pack of 20pcs

Clip-master - 112 x 49mm nominal half round system



4  
life

## GUTTER

Size	Colour	Qty	Part no.
3m	B G BR AG	5	RGC3
4m	W B G BR AG	5	RGC4



## JOINT BRACKET

Colour	Qty	Part no.
W B G BR AG	15	RUC1

Adaptors to join different gutter profiles are available to order



## FASCIA BRACKET

Colour	Qty	Part no.
W B G BR AG	50	RKC1

When used with 2 hole screw fixings, brackets meet the heavy class of BS EN 1462



## ANGLE

Size	Colour	Qty	Part no.
90°	W B G BR AG	15	RAC1
45°	W B G BR AG	10	RAC2
Custom	W B G BR		RFB104

Special gutter angles are available to order  
Please state angle required



## RUNNING OUTLET - Circular spigot

Spigot size	Colour	Qty	Part no.
68mm	W B G BR AG	15	ROC1



## STOPEND OUTLET

Spigot size	Colour	Qty	Part no.
68mm	W B G BR AG	15	ROC2



## EXTERNAL STOPEND

Colour	Qty	Part no.
W B G BR AG	40	REC1



## CLIP-MASTER TO FLOWLINE ADAPTOR

Colour	Qty	Part no.
W B BR	1	RGA2R

Other gutter adaptors are available to order



## NOTCH ADAPTOR

Colour	Qty	Part no.
B	20	RGNA1

To adapt fitting for notch jointing, pack of 20pcs

# Marley Rainwater

Circular downpipe - 68mm system



## DOWNPIPE - 68mm

Size	Colour	Qty	Part no.
2.5m	W B G BR AG	4	RPH2525
3m	W B G BR AG	4	RPH253
5.5m	W B G BR AG	4	RPH2555



## PIPE SOCKET - Loose

Size	Colour	Qty	Part no.
68mm	W B G BR AG	10	RL25



## PIPE SOCKET

Size	Colour	Qty	Part no.
68mm	W B AG	10	RLR25

Solvent weld pipe socket with push-fit seal



## PIPE CLIP

Size	Colour	Qty	Part no.
68mm	W B G BR AG	30	RCZ253



## SOCKET CLIP

Size	Colour	Qty	Part no.
68mm	W B G BR AG	20	RC251

Includes nut and bolt



## PIPE CLIP

Size	Colour	Qty	Part no.
68mm	W B G BR AG	20	RC252

Includes nut and bolt



## BACKPLATE

Colour	Qty	Part no.
W B G BR AG	20	RCB300

PVCu. For use with RC251/2, RCE2 and RC32 pipe clips  
Extension backplate RT200 also available



## BEND - 87 1/2°

Size	Colour	Qty	Part no.
68mm	W B G BR AG	25	RB251

Socket/push-fit spigot



## BEND - 67 1/2°

Size	Colour	Qty	Part no.
68mm	W B G BR AG	25	RNE255

Socket/push-fit spigot



## BEND - 67 1/2°

Size	Colour	Qty	Part no.
68mm	W B G BR AG	25	RB252

Socket/spigot



## BEND - 67 1/2°

Size	Colour	Qty	Part no.
68mm	W B G BR AG	10	RNA250

Socket/socket. For deep fascias



## BEND - 45°

Size	Colour	Qty	Part no.
68mm	W B G BR AG	25	RB253

Socket/push-fit spigot



## BEND - 20°

Size	Colour	Qty	Part no.
68mm	W B G BR AG	10	RNE253

Socket/spigot. For 25mm offset construction



## BENDS - 20°

Size	Colour	Qty	Part no.
68mm	W B G BR AG	10	RNE252

Socket/socket. For 25mm offset construction



## BRANCH - 67 1/2°

Size	Colour	Qty	Part no.
68mm	W B G BR AG	10	RY252

Socket/spigot



## ACCESS PIPE

Size	Colour	Qty	Part no.
68mm	W B G BR AG	15	RF25

Socket/spigot

**Key to symbols and colours:** W: White B: Black G: Grey AG: Anthracite Grey BR: Brown NU: Neutral V: Vandyke Brown  
FF: Foundry Finish Kitemark certified product BBA certified product

# Marley Rainwater

Circular downpipe - 68mm system



## SHOE

Size	Colour	Qty	Part no.
68mm	W B G BR AG	15	RS25



## LEAF GUARD

Size	Colour	Qty	Part no.
68mm	W B G BR AG	30	RV225



## HOPPER HEAD

Size	Colour	Qty	Part no.
68/65mm	W B G BR AG	6	RH252

W 308mm x H 220mm x D 174mm

Suitable for use with 68mm circular and 65mm square downpipe, using appropriate socket



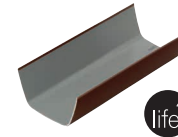
## HOPPER HEAD

Size	Colour	Qty	Part no.
68mm	B	1	RH25

W 425mm x H 238mm x D 190mm

Circular spigot outlet

Flowline - 112 x 60mm Rectilinear system



## GUTTER

Size	Colour	Qty	Part no.
4m	W B BR AG	5	RGF4



## JOINT BRACKET

Colour	Qty	Part no.
W B BR AG	12	RUF1

Other gutter adaptors are available to order



## FASCIA BRACKET

Colour	Qty	Part no.
W B BR AG	40	RKF2

When used with 2 hole screw fixings, brackets meet the heavy class of BS EN 1462



## ANGLE

Size	Colour	Qty	Part no.
90°	W B BR AG	15	RAF1
45°	W B BR AG	20	RAF2
Custom	W B BR AG		RFB102

Special gutter angles are available to order  
Please state angle required



## RUNNING OUTLET

Colour	Qty	Part no.
W B BR AG	12	ROF1

Suitable for 68mm circular or 65mm square downpipes



## STOPEND OUTLET

Colour	Qty	Part no.
W B BR AG	15	ROF11

Suitable for 68mm circular or 65mm square downpipes



## EXTERNAL STOPEND

Colour	Qty	Part no.
W B BR AG	20	REF2



## CLIP-MASTER TO FLOWLINE ADAPTOR

Colour	Qty	Part no.
W B BR	1	RG2R

Other gutter adaptors are available to order



## NOTCH ADAPTOR

Colour	Qty	Part no.
B	20	RGNA1

To adapt fitting for notch jointing, pack of 20pcs

Flowline is manufactured to BS EN 607



# Marley Rainwater

Square downpipe - 65mm system



4  
life

## DOWNPIPE - 65mm

Size	Colour	Qty	Part no.
3m	W B BR AG	6	RPE3
5.5m	W B BR AG	2	RPE2555



## SOCKET - With fixing lugs

Size	Colour	Qty	Part no.
65mm	W B BR AG	10	RLE1



## SOCKET - Plain

Size	Colour	Qty	Part no.
65mm	W B BR AG	10	RLE11



## PIPE CLIP

Size	Colour	Qty	Part no.
65mm	W B BR AG	30	RCE1



## PIPE CLIP - Stand off

Size	Colour	Qty	Part no.
65mm	W B BR AG	5	RCE3



## PIPE CLIP

Size	Colour	Qty	Part no.
65mm	W B BR AG	10	RCE2

Includes nut and bolt



## BACKPLATE

Colour	Qty	Part no.
W B G BR AG	20	RCB300

PVCu. For use with RC251/2, RCE2 and RC32 pipe clips  
Extension backplate RT200 also available



## OFFSET BEND - 87½°

Size	Colour	Qty	Part no.
65mm	W B BR AG	15	RBE3

Socket/socket



## OFFSET BEND - 67½°

Size	Colour	Qty	Part no.
65mm	W B BR AG	15	RBE1

Socket/spigot

Key to symbols and colours: W: White B: Black G: Grey AG: Anthracite Grey BR: Brown NU: Neutral V: Vandyke Brown  
FF: Foundry Finish Kitemark certified product BBA certified product



## OFFSET BEND - 50mm projection

Colour	Qty	Part no.
W B BR AG	10	RNE1

Socket/spigot



## BRANCH - 67½°

Size	Colour	Qty	Part no.
65mm	W B BR AG	15	RYE1

Socket/spigot



## ACCESS PIPE

Size	Colour	Qty	Part no.
65mm	W B BR AG	30	RFB91

Socket/spigot



## SHOE - With fixing lugs

Size	Colour	Qty	Part no.
65mm	W B BR AG	15	RSE1

Socket/spigot



## SHOE

Size	Colour	Qty	Part no.
65mm	W B BR AG	15	RSE2

Socket/spigot



## OUTLET ADAPTOR

Size	Colour	Qty	Part no.
65/68mm	W B BR AG	120	RLE3

For use with RLE11 to adapt RH25 to suit 65mm square downpipe



## DRAIN ADAPTOR - Socketed pipe

Size	Colour	Qty	Part no.
65/68mm	W B BR AG	25	RLE2

Adapts 65mm square socket to 68mm socketed pipe



## DRAIN ADAPTOR - Plain ended pipe

Size	Colour	Qty	Part no.
65/68mm	W B BR AG	25	RLE4

Adapts 65mm square socket to 68mm plain ended pipe

# Marley Rainwater

Regency - 125 x 70mm profiled system



## GUTTER

Size	Colour	Qty	Part no.
4m	W	5	WR896
4m	B	5	BR896
4m	V	5	VR896
4m	AG	5	AGR896

CSA: 682mm<sup>2</sup>



## JOINT BRACKET

Colour	Qty	Part no.
W	5	WR908
B	5	BR908
V	5	VR908
AG	5	AGR908



## FASCIA BRACKET

Colour	Qty	Part no.
W	20	WR910
B	20	BR910
V	20	VR910
AG	20	AGR910

Fix at 1m centres - max



## STOPEND - External

Colour	Qty	Part no.
W	5	WR913
B	5	BR913
V	5	VR913
AG	5	AGR913



## STOPEND - Internal

Colour	Qty	Part no.
W	5	WR902
B	5	BR902
V	5	VR902
AG	5	AGR902



## ANGLE - 90° External

Colour	Qty	Part no.
W	5	WR935
B	5	BR935
V	5	VR935
AG	5	AGR935



## ANGLE - 90° Internal

Colour	Qty	Part no.
W	5	WR945
B	5	BR945
V	5	VR945
AG	5	AGR945



## ANGLE - 135° External

Colour	Qty	Part no.
W	5	WR937
B	5	BR937
V	5	VR937
AG	5	AGR937



## ANGLE - 135° Internal

Colour	Qty	Part no.
W	5	WR947
B	5	BR947
V	5	VR947
AG	5	AGR947

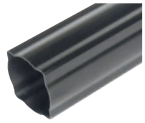


## RUNNING OUTLET

Colour	Qty	Part no.
W	5	WR911
B	5	BR911
V	5	VR911
AG	5	AGR911

# Marley Rainwater

Regency - 74mm profiled system



## DOWNPIPE - 74mm

Size	Colour	Qty	Part no.
4m	W	6	WR893
4m	B	6	BR893
4m	V	6	VR893
4m	AG	6	AGR893



## BRACKET

Size	Colour	Qty	Part no.
74mm	W	10	WR919
74mm	B	10	BR919
74mm	V	10	VR919
74mm	AG	10	AGR919

Fix at 2m centres max



## 5MM BRACKET SPACER

Size	Colour	Part no.
74mm	V	VR927
74mm	AG	AGR927



## CONNECTOR

Size	Colour	Qty	Part no.
74mm	W	5	WR917
74mm	B	5	BR917
74mm	V	5	VR917
74mm	AG	5	AGR917



## BEND - 112½°

Size	Colour	Qty	Part no.
74mm	W	5	WR920
74mm	B	5	BR920
74mm	V	5	VR920
74mm	AG	5	AGR920



## BRANCH - 112½°

Size	Colour	Qty	Part no.
74mm	W	5	WR922
74mm	B	5	BR922
74mm	V	5	VR922
74mm	AG	5	AGR922



## SHOE

Size	Colour	Qty	Part no.
74mm	W	5	WR921
74mm	B	5	BR921
74mm	V	5	VR921
74mm	AG	5	AGR921



## REGENCY TO 68MM REDUCER

Size	Colour	Qty	Part no.
74/68mm	W	5	WR924
74/68mm	B	5	BR924
74/68mm	V	5	VR924
74/68mm	AG	5	AGR924



## HOPPER HEAD

Size	Colour	Qty	Part no.
68mm	W	1	WR014
68mm	B	1	BR014
68mm	V	1	VR014
68mm	AG	1	AGR014

W 254mm x H 230mm x D 150mm

Key to symbols and colours: W: White B: Black G: Grey AG: Anthracite Grey BR: Brown NU: Neutral V: Vandyke Brown  
FF: Foundry Finish Kitemark certified product BBA certified product

# Marley Rainwater

Deepflow 150 - 155 x 98mm high capacity system



## GUTTER

Size	Colour	Qty	Part no.
4m	W B BR AG	4	RGJ4



## JOINT BRACKET

Colour	Qty	Part no.
W B BR AG	8	RUJ1

Adaptors to join different gutter profiles are available to order



## FASCIA BRACKET

Colour	Qty	Part no.
W B BR AG	20	RKJ1

When used with 2 hole screw fixings, brackets meet the heavy class of BS EN 1462



## ANGLE

Size	Colour	Qty	Part no.
90°	W B BR AG	4	RAJ1
45°	W B BR AG	1	RAJ2
Custom	W B BR AG		RFB150

Special gutter angles are available to order  
Please state angle required



## RUNNING OUTLET

Colour	Qty	Part no.
W B BR AG	12	ROJ1

82mm circular outlet



## STOPEND - External

Colour	Qty	Part no.
W B BR AG	4	REJ1



## STOPEND - Internal

Colour	Qty	Part no.
W B BR AG	4	REJ2



## NOTCH ADAPTOR

Colour	Qty	Part no.
B	20	RGNA1

To adapt fitting for notch jointing, pack of 20pcs

## Circular downpipe - 82mm system



## DOWNPIPE - 82mm

Size	Colour	Qty	Part no.
3m	W B BR AG	4	RPH33
5.5m	W B BR AG	4	RPH355

5.5m length available to order



## SOCKET

Size	Colour	Qty	Part no.
82mm	W B BR AG	4	RL3



## PIPE CLIP

Size	Colour	Qty	Part no.
82mm	W B BR AG	10	RC3



## PIPE CLIP

Size	Colour	Qty	Part no.
82mm	W B BR AG	20	RC32

Includes nut and bolt



## BACKPLATE

Colour	Qty	Part no.
W B G BR AG ♻️	20	RCB300

PVCu. For use with RC251/2, RCE2 and RC32 pipe clips. Extension backplate RT200 also available



## BEND - 45°

Size	Colour	Qty	Part no.
82mm	W B BR AG	4	RB33*



## BEND - 67½°

Size	Colour	Qty	Part no.
82mm	W B BR AG	4	RNE3



## BEND - 87½°

Size	Colour	Qty	Part no.
82mm	W B BR AG	4	RB31*



## BRANCH - 45°

Size	Colour	Qty	Part no.
82mm	W B BR AG	9	RY3*



## ACCESS PIPE

Size	Colour	Qty	Part no.
82mm	W B BR AG	18	RF3*

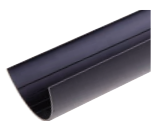


## SHOE

Size	Colour	Qty	Part no.
82mm	W B BR AG	4	RS3

# Marley Rainwater

Foundry Finish, Cast iron effect - 112mm half round system



## GUTTER

Size	Colour	Qty	Part no.
4m	FF	1	CBR512



## JOINT BRACKET

Colour	Qty	Part no.
FF	10	CBR008



## SUPPORT BRACKET

Colour	Qty	Part no.
FF	50	CBR010

Fix at 1m centres - max, 1 screw fixing



## ANGLE - 90°

Colour	Qty	Part no.
FF	5	CBR005



## ANGLE - 135°

Colour	Qty	Part no.
FF	5	CBR007



## RUNNING OUTLET

Colour	Qty	Part no.
FF	5	CBR011

68mm circular outlet



## EXTERNAL STOPEND

Colour	Qty	Part no.
FF	10	CBR013

## FOUNDRY FINISH

Foundry Finish is a cast-iron effect PVCu system, offering a great combination of traditional good looks with modern lightweight materials.



- Choice of two profiles (half-round and semi-elliptical) with circular downpipe system.
- Authentic period-style fittings.
- Provides an economical alternative to cast iron.
- Lightweight and easy to install.
- Foundry Finish Soil pipe and fittings also available - see page 14 for details.

Key to symbols and colours: W: White B: Black G: Grey AG: Anthracite Grey BR: Brown NU: Neutral V: Vandyke Brown  
FF: Foundry Finish Kitemark certified product BBA certified product

Foundry Finish, Cast iron effect - 125x75mm semi-elliptical system



## GUTTER

Size	Colour	Qty	Part no.
4m	FF	1	CBR640

For deep profile



## JOINT BRACKET

Colour	Qty	Part no.
FF	10	CBR608

For deep profile



## SUPPORT BRACKET

Colour	Qty	Part no.
FF	50	CBR610

Fix at 1m centres - max, 2 screw fixing. For deep profile



## ANGLE - 90° External

Colour	Qty	Part no.
FF	5	CBR605

For deep profile



## ANGLE - 90° Internal

Colour	Qty	Part no.
FF	5	CBR615

For deep profile



## ANGLE - 135° External

Colour	Qty	Part no.
FF	5	CBR607

For deep profile



## ANGLE - 135° Internal

Colour	Qty	Part no.
FF	5	CBR617

For deep profile



## RUNNING OUTLET

Colour	Qty	Part no.
FF	5	CBR611

Fits 68mm pipe. For deep profile



## STOPEND

Type	Colour	Qty	Part no.
Internal	FF	10	CBR602
External	FF	10	CBR613

For deep profile

# Marley Rainwater

Foundry Finish, Cast iron effect, circular downpipe - 68mm system



## DOWNPIPE - 68mm

Size	Colour	Qty	Part no.
2.75m	FF	1	CBR519



## EARED PIPE CONNECTOR

Size	Colour	Qty	Part no.
68mm	FF	10	CBR017



## EARED PIPE BRACKET

Size	Colour	Qty	Part no.
68mm	FF	10	CBR043

Fix at 2m centres - max, 2 screw fixing



## BEND - 92 1/2°

Size	Colour	Qty	Part no.
68mm	FF	10	CBR577



## BEND - 112 1/2°

Size	Colour	Qty	Part no.
68mm	FF	10	CBR020



## BRANCH - 112 1/2°

Size	Colour	Qty	Part no.
68mm	FF	5	CBR022



## EARED SHOE

Size	Colour	Qty	Part no.
68mm	FF	5	CBR021



## CURVED HOPPER HEAD

Size	Colour	Qty	Part no.
68mm	FF	1	CBR044

W 270mm x H 253mm x D 190mm



## COACH BOLT

Colour	Qty	Part no.
FF	10	CBF001

Pack of 10pcs

Highflo - 170x73mm half-round system



## GUTTER

Size	Colour	Qty	Part no.
4m	G	5	GR515
4m	B	5	BR515
4m	W	5	WR515



## JOINT BRACKET

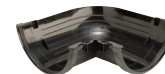
Colour	Qty	Part no.
G	10	GR042
B	10	BR042
W	10	WR042



## SUPPORT BRACKET

Colour	Qty	Part no.
G	20	GR452
B	20	BR452
W	20	WR452

Fix at 1m centres - max, 2/3 screw fixing



## ANGLE - 90°

Colour	Qty	Part no.
G	1	GR451
B	1	BR451
W	1	WR451



## RUNNING OUTLET

Colour	Qty	Part no.
G	1	GR454
B	1	BR454
W	1	WR454

Fits 110mm pipe



## STOPEND OUTLET

Colour	Qty	Part no.
G	1	GR455
B	1	BR455

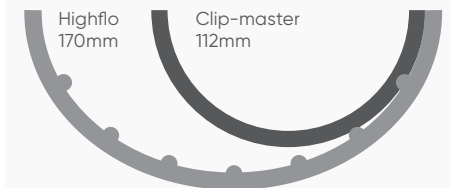
Fits 110mm pipe



## EXTERNAL STOPEND

Colour	Qty	Part no.
G	10	GR402
B	10	BR402
W	10	WR402

## LARGE CAPACITY COMPARISON



# Marley Rainwater

Circular downpipe - 110mm system

Key to symbols and colours: W: White B: Black G: Grey AG: Anthracite Grey BR: Brown NU: Neutral V: Vandyke Brown  
FF: Foundry Finish  Kitemark certified product  BBA certified product



## DOWNPIPE - 110mm

Size	Colour	Qty	Part no.
3m	G	1	GS505
3m	B	1	BS505
3m	W	1	WS505
4m	G	1	GS506
4m	B	1	BS506
4m	W	1	WS506



## SOCKETED DOWNPIPE - 110mm

Size	Colour	Qty	Part no.
3m	G	1	GS508
3m	B	1	BS508
3m	W	1	WS508



## PIPE CONNECTOR

Size	Colour	Qty	Part no.
110mm	G	1	GS208
110mm	B	1	BS208
110mm	W	1	WS208



## DRAIN CONNECTOR

Size	Colour	Qty	Part no.
110mm	G	1	GS121
110mm	B	1	BS121

Finned tail



## PIPE BRACKET

Size	Colour	Qty	Part no.
110mm	G	10	GS217
110mm	B	10	BS217
110mm	W	10	WS217

Fix at 2m centres – max, 1 screw fixing



## PIPE BRACKET

Size	Colour	Qty	Part no.
110mm	G	10	GS219
110mm	B	10	BS219
110mm	W	10	WS219

Fix at 2m centres – max, 2 screw fixing



## SOCKET BRACKET

Size	Colour	Qty	Part no.
110mm	G	10	GS220
110mm	B	10	BS220
110mm	W	10	WS220

Fix at 2m centres – max, 2 screw fixing



## PIPE/SOCKET BRACKET

Size	Colour	Qty	Part no.
110mm	G	5	GS570

Galvanised



## SHOE

Size	Colour	Qty	Part no.
110mm	G	1	GS266
110mm	B	1	BS266
110mm	W	1	WS266



## HOPPER HEAD

Size	Colour	Qty	Part no.
110mm	G	1	GR465
110mm	B	1	BR465
110mm	W	1	WR465

W 316mm x H 223mm x D 203mm



## BEND - 92½°

Size	Colour	Qty	Part no.
110mm	G	1	GS322
110mm	B	1	BS322
110mm	W	1	WS322



## TOP OFFSET BEND - 112½°

Size	Colour	Qty	Part no.
110mm	G	1	GS270
110mm	B	1	BS270
110mm	W	1	WS270



## BOTTOM OFFSET BEND - 112½°

Size	Colour	Qty	Part no.
110mm	G	1	GS271
110mm	B	1	BS271
110mm	W	1	WS271



## BEND - 135°

Size	Colour	Qty	Part no.
110mm	G	1	GS331
110mm	B	1	BS331
110mm	W	1	WS331



## BRANCH - 112½°

Size	Colour	Qty	Part no.
110mm	G	1	GS336
110mm	B	1	BS336



## BRANCH - 92½°

Size	Colour	Qty	Part no.
110mm	G	1	GS334
110mm	B	1	BS334



## ACCESS PIPE

Size	Colour	Qty	Part no.
110mm	G	1	GS309
110mm	B	1	BS309
110mm	W	1	WS309

# Marley Rainwater

Stormflo - 200 x 133mm semi-elliptical system



## GUTTER

Size	Colour	Qty	Part no.
4m	G	2	GR740
4m	B	2	BR740



## JOINT BRACKET

Colour	Qty	Part no.
G	6	GR708
B	6	BR708

3 Screw Fixing



## SUPPORT BRACKET

Colour	Qty	Part no.
G	5	GR710
B	5	BR710

Fix at 800mm centres - max, 3 screw fixing



## RUNNING OUTLET

Colour	Qty	Part no.
G	1	GR711
B	1	BR711

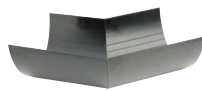
2 screw fixing, spigot fits 160mm pipe



## ANGLE - 90°

Colour	Qty	Part no.
G	5	GR705
B	5	BR705

Remember: order 2 joint brackets



## ANGLE - 135°

Colour	Qty	Part no.
G	1	GR707
B	1	BR707

Remember: order 2 joint brackets



## OUTLET ADAPTER

Colour	Qty	Part no.
G	2	GR716
B	2	BR716

Use with a R711 to convert to 110mm downpipe

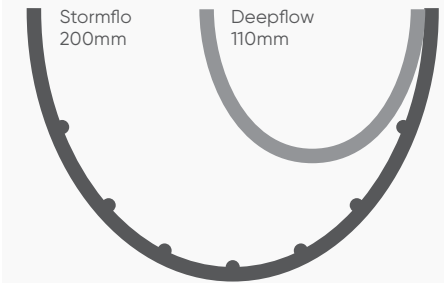


## EXTERNAL STOPEND

Colour	Qty	Part no.
G	2	GR713
B	2	BR713

Remember: order 1 Support bracket

## LARGE CAPACITY COMPARISON



## STORMFLO BOTTOM FIXING

Stormflo fittings have been designed to ensure strength and stability, even in the most adverse weather conditions.


The toughened bottom fixing point offers increased protection from wind updrafts on remote and exposed buildings.





# Marley Rainwater

Circular downpipe - 160mm system

Key to symbols and colours: W: White B: Black G: Grey AG: Anthracite Grey BR: Brown NU: Neutral V: Vandyke Brown  
 FF: Foundry Finish  Kitemark certified product  BBA certified product



## DOWNPIPE - 160mm

Size	Colour	Qty	Part no.
3m	G	1	GS534
3m	B	1	BS534
4m	G	1	GS535



## SOCKETED DOWNPIPE - 160mm

Size	Colour	Qty	Part no.
3m	G	1	GS533
3m	B	1	BS533



## PIPE BRACKET

Size	Colour	Qty	Part no.
160mm	G	10	GS412
160mm	B	10	BS412

Fix at 2m centres - max, 1 screw fixing



## PIPE/SOCKET BRACKET

Size	Colour	Qty	Part no.
160mm	G	5	GS571

Fix at 2m centres - max, 2 screw fixing. Galvanised



## BEND - 92½

Size	Colour	Qty	Part no.
160mm	G	1	GS403
160mm	B	1	BS403



## TOP OFFSET BEND - 112½

Size	Colour	Qty	Part no.
160mm	G	1	GS424
160mm	B	1	BS424



## BOTTOM OFFSET BEND - 112½

Size	Colour	Qty	Part no.
160mm	G	1	GS425
160mm	B	1	BS425



## BEND - 135½

Size	Colour	Qty	Part no.
160mm	G	1	GS404
160mm	B	1	BS404



## PIPE CONNECTOR

Size	Colour	Qty	Part no.
160mm	G	1	GS406
160mm	B	1	BS406



## ACCESS PIPE

Size	Colour	Qty	Part no.
160mm	G	1	GS472
160mm	B	1	BS472



## BRANCH - 92½

Size	Colour	Qty	Part no.
160mm	G	1	GS427
160mm	B	1	BS427



## SHOE

Size	Colour	Qty	Part no.
160mm	G	1	GS436
160mm	B	1	BS436



## REDUCER

Size	Colour	Qty	Part no.
160x110mm	G	1	GS420

# Marley Rainwater

Ancillary items



## GUTTER LEAF GUARD

Size	Qty	Part no.
10m (20x50cm lengths)	1	RGG10

Suitable for use with Clip-Master and Flowline



## GUTTER GUARD CLIP

Qty	Part no.
1	RGIX

Use with RGG10, pack of 18pcs



## DRAIN LEAF GUARD

Size	Colour	Qty	Part no.
300mm x 265mm	B	15	UG41



## RAIN DIVERTER

Colour	Qty	Part no.
W B G BR	20	RD25R

Suitable for use with 68mm circular or 65mm square PVCu downpipes



## WATER BUTT CONNECTOR

Colour	Qty	Part no.
B	15	RDC26R



## WEDGE SPACER

Colour	Qty	Part no.
G	10	GR002

Not for use with Highflo or Stormflo



## FASCIA BRACKET SPACER/HEIGHT ADJUSTER

Colour	Qty	Part no.
W B	45	RGS1

Includes nut and bolt. Suitable for use with Deepflow, Clip-master and Flowline fascia brackets. Spacer width 17mm, 25mm height adjustment



## ANGLED FASCIA BRACKET ADAPTOR

Size	Qty	Part no.
22½°	50	RKA1
30°	100	RKA2

Galvanised mild steel



## EXTENSION BACKPLATE

Colour	Qty	Part no.
W B G BR	50	RT200

PVCu. For use with RC251/2, RCE2 and RC32 pipe clips as an alternative to RCB300



## EXTENSION BRACKET

Colour	Qty	Part no.
B	20	RT250B
G	20	RT250G

For cladded wall applications



## COVER PLATE

Size	Colour	Qty	Part no.
110mm	B	1	RT2501B
110mm	G	1	RT2501

For use with RT250G



## PIPE CLIP

Size	Colour	Qty	Part no.
110mm	B	20	RPC1B
110mm	G	20	RPC1



## SOCKET CLIP

Size	Colour	Qty	Part no.
110mm	B	1	RSC1B
110mm	G	1	RSC1



## FIXED RAFTER ARM

Type	Qty	Part no.
Side	40	RSA1
Top	50	RTA1

Electroplated mild steel. Includes 2 cadmium plated nuts and bolts



## ADJUSTABLE RAFTER ARM

Type	Qty	Part no.
Side	1	RSA1A
Top	1	RTA1A

Galvanised steel. Includes nut, bolt and anti slip washer

## SPARE NUTS AND BOLTS

Size	Qty	Part no.
12x5mm	10	RNB21

Pack of 10pcs



## RISE AND FALL EXTENSION ARM

Qty	Part no.
50	RKF1

Electroplated mild steel. Includes 2 cadmium plated nuts and bolts

# Marley Rainwater

Ancillary items



## DRIVE-IN SPIKE

Qty	Part no.
50	RSS1

Galvanised mild steel



## RISE AND FALL BRACKET

Type/size	Qty	Part no.
Regency	25	GR909
Foundry Finish, Half-round 112mm	25	GR018
Foundry Finish, 125mm	25	GR601

Remember you'll need one either side of outlets, angles & joint brackets. Supplied with 230mm stake



## LONG RISE AND FALL BRACKET

Type/size	Qty	Part no.
Foundry Finish, Half-round 112mm	25	GR009

Supplied with 300mm stake



## GUTTER ADAPTOR

Type	Qty	Part no.
Right hand	1	RGA4
Left hand	1	RGA5

Clip-master to Ogee cast aluminium



## HALF ROUND TO CAST IRON GUTTER ADAPTOR

Colour	Qty	Part no.
B	25	RGA1R

Suitable for adapting 100mm to 112mm half round  
Other gutter adaptors are available to order



## UNIVERSAL GUTTER NOTCHING TOOL

Qty	Part no.
1	RGN1



Suitable for use with Deepflow, Clip-master, Flowline and Deepflow150 gutter systems



## DRAIN ADAPTOR

Size	Colour	Qty	Part no.
110mm	B	100	RA42
110x68mm	W B G BR	10	RRM425

RA42 can be cut to fit all shapes and sizes of downpipe. RRM425 - 110mm socket to 68mm socket

**Key to symbols and colours:** W: White B: Black G: Grey AG: Anthracite Grey BR: Brown NU: Neutral V: Vandyke Brown  
FF: Foundry Finish  Kitemark certified product  BBA certified product



## GUTTER SEAL

Colour	Qty	Part no.
B	1	RNG50

Suitable for use with Deepflow, Clip-master, Flowline and Deepflow150 gutter systems. Length 225mm – cut to required length



## FLAT RAINWATER SEAL

Colour	Qty	Part no.
B	5	RNG60

Suitable for use with RGA1R and old (pre 1985) rainwater systems which used flat seals. Length 235mm – cut to required length, pack of 5pcs



## SPARE RAINWATER SEAL

Type/size	Qty	Part no.
Regency	1	3SR1122A
Foundry finish Half-Round	1	3SSI200
Foundry finish 125	1	3SR1125
Highflo	1	3SR1520
Stormflo	1	3SRS355



## SPARE RING SEAL

Type/size	Qty	Part no.
'T' ring 82	5	SR82T

For use with RB31, RB33, RY3 and RF3 fittings if required, pack of 5pcs

# Marley Rainwater

Hopper heads



## HOPPER HEAD

Size	Colour	Qty	Part no.
68/65mm	W B G BR AG	6	RH252
W 308mm x H 220mm x D 174mm			
Dual spigot outlet			
Flow rate 5.14 l/s			



## HOPPER HEAD

Size	Colour	Qty	Part no.
82mm	W B G BR AG	6	SH30
W 280mm x H 230mm x D 155mm			
Circular spigot outlet			
Flow rate 4.11 l/s			



## HOPPER HEAD

Size	Colour	Qty	Part no.
68mm	B	1	RH25
110mm	B G	1	SH40
W 425mm x H 238 mm x D 190mm			
Circular spigot outlet			
Flow rate - RH25 7.56 l/s, SH40 15.12 l/s			



## HOPPER HEAD

Size	Colour	Qty	Part no.
68mm	W	1	WR014
68mm	B	1	BR014
68mm	V	1	VR014
68mm	AG	1	AGR014
W 254mm x H 230mm x D 150mm			



## CURVED HOPPER HEAD

Size	Colour	Qty	Part no.
68mm	FF	1	CBR044
W 270mm x H 253mm x D 190mm			



## HOPPER HEAD

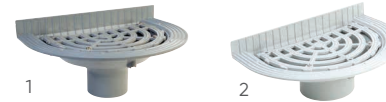
Size	Colour	Qty	Part no.
110mm	G	1	GR465
110mm	B	1	BR465
110mm	W	1	WR465
W 316mm x H 223mm x D 203mm			

PVCu roof outlets



## ROOF OUTLET

Size	Qty	Part no.
82mm (1)	1	RV637
110mm (2)	1	RV369
160mm (3)	1	RV482
Spigot tail		



## BALCONY OUTLET

Size	Qty	Part no.
82mm (1)	1	RV195
110mm (2)	1	RV196

Solvent socket tail. Studs may require trimming upon installation



## BOX GUTTER OUTLET

Size	Qty	Part no.
82mm	1	RV491

Spigot tail



## OUTLET

Size	Type	Colour	Qty	Part no.
68mm	Flat roof	G	3	ROF25
68mm	Balcony	G	3	ROB25

68mm spigot outlet. Items are supplied bagged loose for site assembly



## UNIVERSAL FLANGE

Size	Colour	Qty	Part no.
3mm thick	G	5	SOF1



## OUTLET GRATING

Colour	Type	Qty	Part no.
G	Flat roof	25	SOF12
G	Balcony	35	SOB1

For use with SOF1



## STRAIGHT FLANGE CONNECTOR

Size	Colour	Qty	Part no.
92mm	G	20	SGS31G
110mm	W	20	SGS41W

For use with ROF25 and ROB25



## BENT FLANGE CONNECTOR

Size	Colour	Qty	Part no.
110mm	W	4	STS41W

Socket/socket. For use with ROF25 and ROB25

# Need to find a stockist?

We have a tool for that!

[alixis.co.uk/stockist-finder](https://alixis.co.uk/stockist-finder)





# | Marley PVC Soil and Waste



# Marley PVC Soil and Waste

Solvent waste PVC-c / PVCu



## PIPE - 4m

Size	Colour	Qty	Part no.
32mm	W B G	10	KP104
40mm	W B G	10	KP204
50mm	W B G	5	KP304

Double spigot



## STRAIGHT COUPLING

Size	Colour	Qty	Part no.
32mm	W B G	10	KSC1
40mm	W B G	10	KSC2
50mm	W B G	10	KSC3

## STRAIGHT COUPLING - Expansion/ adaptor

Size	Colour	Qty	Part no.
32mm	W B G	10	KEC1
40mm	W B G	10	KEC2
50mm	W B G	10	KEC3



## CLIP - Open PVCu

Size	Colour	Qty	Part no.
32mm	W B G	10	KF1
40mm	W B G	10	KF2
50mm	W B G	10	KF3



## CLIP - Saddle ABS

Size	Colour	Qty	Part no.
32mm	W B G	10	WC3
40mm	W B G	10	WC4
50mm	W B G	80	WC5



## BEND - 88½°

Size	Colour	Qty	Part no.
32mm	W B G	10	KB1
40mm	W B G	10	KB2
50mm	W B G	10	KB3



## BEND - 45°

Size	Colour	Qty	Part no.
32mm	W B G	10	KB12
40mm	W B G	10	KB22
50mm	W B G	10	KB32



## BEND - 45° Spigot

Size	Colour	Qty	Part no.
32mm	W B G	10	KBA12
40mm	W B G	10	KBA22
50mm	W B G	20	KBA32



## KNUCKLE BEND - 90°

Size	Colour	Qty	Part no.
32mm	W B G	10	KBK15
40mm	W B G	20	KBK25

KBK25 solvent weld inside boss upstand



## BEND - 87½°

Size	Colour	Qty	Part no.
32mm	W B G	20	KBS1
40mm	W B G	20	KBS2
50mm	W B G	20	KBS3

Long spigot



## TEE - 88½°

Size	Colour	Qty	Part no.
32mm	W B G	10	KT1
40mm	W B G	10	KT2
50mm	W B G	10	KT3



## TEE - 45°

Size	Colour	Qty	Part no.
32mm	W G	10	KT21
40mm	W G	10	KT31



## CROSS TEE - 88½°

Size	Colour	Qty	Part no.
40mm	W G	10	KXT21
50mm	W G	10	KXT31



## ACCESS PLUG

Size	Colour	Qty	Part no.
32mm	W B G	10	KAP1
40mm	W B G	10	KAP2
50mm	W B G	10	KAP3



# Marley PVC Soil and Waste

Solvent waste PVC-c / PVCu



## SOCKET REDUCER - 32-21.5

Size	Colour	Qty	Part no.
32-21.5mm	W B G	10	KR175



## SOCKET REDUCER - 40-32

Size	Colour	Qty	Part no.
40-32mm	W B G	10	KR210



## SOCKET REDUCER - 50-32

Size	Colour	Qty	Part no.
50-32mm	W G	10	KR310



## SOCKET REDUCER - 50-40

Size	Colour	Qty	Part no.
50-40mm	W B G	10	KR320



## IRON ADAPTOR - Female

Size	Colour	Qty	Part no.
32mm	W G	10	KFA1
40mm	W G	10	KFA2
50mm	W G	10	KFA3



## IRON ADAPTOR - Male

Size	Colour	Qty	Part no.
32mm	W G	10	KMA1
40mm	W G	10	KMA2
50mm	W G	10	KMA3



## PIPE - 3m

Size	Colour	Qty	Part no.
32mm	W B G	10	WAP33
40mm	W B G	10	WAP43
50mm	W B G	5	WAP53



## STRAIGHT COUPLING

Size	Colour	Qty	Part no.
32mm	W B G	10	WAC3
40mm	W B G	10	WAC4
50mm	W B G	10	WAC5



## STRAIGHT COUPLING - Expansion/ copper adaptor

Size	Colour	Qty	Part no.
32mm	W B	10	WAC31
40mm	W B	10	WAC41
50mm	W B	10	KEC3*



## CLIP - Open PVCu

Size	Colour	Qty	Part no.
32mm	W B G	10	KF1
40mm	W B G	10	KF2
50mm	W B G	10	KF3



## CLIP - Saddle ABS

Size	Colour	Qty	Part no.
32mm	W B G	10	WC3
40mm	W B G	10	WC4
50mm	W B G	10	WC5



## BEND - 88½°

Size	Colour	Qty	Part no.
32mm	W B G	10	WAB3
40mm	W B G	10	WAB4
50mm	W B G	10	WAB5

Key to symbols and colours: W: White B: Black G: Grey AG: Anthracite Grey BR: Brown NU: Neutral V: Vandyke Brown  
FF: Foundry Finish ♡ Kitemark certified product 🏠 BBA certified product

Solvent waste ABS

# Marley PVC Soil and Waste

Solvent waste ABS



## BEND - 45°

Size	Colour	Qty	Part no.
32mm	W B G	10	WAB31
40mm	W B G	10	WAB41
50mm	W B G	10	WAB51



## BEND - 45° Spigot

Size	Colour	Qty	Part no.
32mm	W B G	10	WAB32
40mm	W B G	10	WAB42



## KNUCKLE BEND - 90°

Size	Colour	Qty	Part no.
32mm	W B G	10	WAB33
40mm	W B G	10	WAB43



## BEND - 90° Spigot / socket

Size	Colour	Qty	Part no.
32mm	W B	50	WAB34
40mm	W B	30	WAB44
50mm	W B	20	WAB54



## ACCESS PLUG

Size	Colour	Qty	Part no.
32mm	W B G	10	WAA3
40mm	W B G	10	WAA4
50mm	W B G	10	WAA5



## TEE - 88½°

Size	Colour	Qty	Part no.
32mm	W B G	10	WAT3
40mm	W B G	10	WAT4
50mm	W B G	10	WAT5



## TEE - 45°

Size	Colour	Qty	Part no.
32mm	W	10	WAT31
40mm	W	10	WAT41
50mm	W	10	WAT51



## CROSS TEE - 88½°

Size	Colour	Qty	Part no.
40mm	W	10	WAT42
50mm	W	10	WAT52



## SOCKET REDUCER

Size	Colour	Qty	Part no.
32mm	W B G	10	WAR43
40mm	W B G	10	WAR53
50mm	W B G	10	WAR54



## IRON ADAPTOR - Female

Size	Colour	Qty	Part no.
32mm	W	10	WAF3
40mm	W	10	WAF4
50mm	W	10	WAF5



## IRON ADAPTOR - Male

Size	Colour	Qty	Part no.
32mm	W	10	WAM3
40mm	W	10	WAM4
50mm	W	10	WAM5



## CAP AND LINING

Size	Colour	Qty	Part no.
32mm	W	10	WAM31

# Marley PVC Soil and Waste

Push-fit waste polypropylene

Key to symbols and colours: W: White B: Black G: Grey AG: Anthracite Grey BR: Brown NU: Neutral V: Vandyke Brown  
FF: Foundry Finish  Kitemark certified product  BBA certified product



## PIPE - 3m

Size	Colour	Qty	Part no.
32mm 	W B G	10	WPP33
40mm 	W B G	10	WPP43



## STRAIGHT COUPLING

Size	Colour	Qty	Part no.
32mm	W B G	10	WPC3
40mm	W B G	10	WPC4



## CLIPS - Open PVCu

Size	Colour	Qty	Part no.
32mm 	W B G	10	KF1
40mm 	W B G	10	KF2



## CLIPS - Saddle ABS

Size	Colour	Qty	Part no.
32mm 	W B G	10	WC3
40mm 	W B G	10	WC4



## BEND - 45°

Size	Colour	Qty	Part no.
32mm	W B G	10	WPB31
40mm	W B G	10	WPB41



## BEND - 45° Spigot

Size	Colour	Qty	Part no.
32mm	W B G	10	WPB32
40mm	W B G	10	WPB42



## KNUCKLE BEND - 90°

Size	Colour	Qty	Part no.
32mm	W B G	10	WPB33
40mm	W B G	10	WPB43



## BEND - 87½° Swept, Socket/socket

Size	Colour	Qty	Part no.
32mm	W B G	10	WPB3
40mm	W B G	10	WPB4



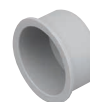
## BEND - 88½° spigot

Size	Colour	Qty	Part no.
32mm	W B G	10	WPB34
40mm	W B G	10	WPB44



## TEE - 88½°

Size	Colour	Qty	Part no.
32mm	W B G	20	WPT31
40mm	W B G	30	WPT41



## ACCESS PLUG

Size	Colour	Qty	Part no.
32mm	W B G	10	WPA31
40mm	W B G	10	WPA41



## SOCKET REDUCER

Size	Colour	Qty	Part no.
40-32mm	W B G	10	WPR43



## MULTI-FIT COMPONENT

Size	Colour	Qty	Part no.
32mm 	G	10	WUM33
40mm 	G	10	WUM34

Fit BS EN 1451, BS EN 1455 or BS EN 1566 pipe.  
Straight tank connector

# Marley PVC Soil and Waste

PVCu vent and overflow system



## PIPE

Size	Colour	Qty	Part no.
3m			
21.5mm	W	30	OP213
3m			
21.5mm	W	30	OP21



## STRAIGHT COUPLING

Size	Colour	Qty	Part no.
21.5mm	W	10	OSC21



## CLIP - Saddle

Size	Colour	Qty	Part no.
21.5mm	W	10	OC21



## BEND - 90°

Size	Colour	Qty	Part no.
21.5mm	W	10	OB90



## BEND - 45°

Size	Colour	Qty	Part no.
21.5mm	W	10	OB45



## TEE - 90°

Size	Colour	Qty	Part no.
21.5mm	W	10	OT90



## ADAPTORS - Female iron - 3/4" BSP female thread

Size	Colour	Qty	Part no.
21.5mm	W	10	OFA21



## ADAPTOR - Straight, to 22mm

Size	Colour	Qty	Part no.
21.5mm	W	10	OCA21



## ADAPTOR - Cap and lining - 3/4" BSP female thread

Size	Colour	Qty	Part no.
21.5mm	W	10	OCL21



## TANK CONNECTOR - Straight

Size	Colour	Qty	Part no.
21.5mm	W	10	OTC21



## TANK CONNECTOR - Bent

Size	Colour	Qty	Part no.
21.5mm	W	10	OBC90

Including polyethylene washers and quick fix Acme threads

# Marley PVC Soil and Waste

Accessories



## SOLVENT CEMENT - 250ml

Size	Qty	Part no.
Tub 250ml	1	KS10



## SOLVENT CEMENT - 500ml

Size	Qty	Part no.
Can 500ml	1	KS20



## SILICONE LUBRICANT - 50g

Size	Qty	Part no.
Tube with sponge applicator 50g	1	SZ50



## SILICONE LUBRICANT - 100g

Size	Qty	Part no.
100g bottle	1	SZ100



## SILICONE LUBRICANT - 400ml

Size	Qty	Part no.
Aerosol* 400ml	1	SZ400



## SILICONE LUBRICANT - 500g

Size	Qty	Part no.
500g tub	1	SZ500

Water Research Centre Approved



## SOLVENT CLEANER

Size	Qty	Part no.
Bottle 250ml	1	KC10

Key to symbols and colours: W: White B: Black G: Grey AG: Anthracite Grey BR: Brown NU: Neutral V: Vandyke Brown  
 FF: Foundry Finish Kitemark certified product BBA certified product

\* an ozone friendly aerosol

# Marley PVC Soil and Waste

Push-fit soil



## PIPE - 110mm co-ex soil

Size	Colour	Qty	Part no.
2.5m			
110mm	G	1	SP4025
3m			
82mm	B G	1	SP303
110mm	W B G	1	SP403
160mm	G	1	SP603
4m			
82mm	G	1	SP304
110mm	G	1	SP404
160mm	G	1	SP604

Push-fit socket



## STRAIGHT COUPLING - Loose pipe socket

Size	Colour	Qty	Part no.
82mm	B G	10	SE300
110mm	W B G	8	SE400
160mm	G	4	SE600



## STRAIGHT COUPLING - Double ring seal slip coupling

Size	Colour	Qty	Part no.
82mm	B G	10	SE305
110mm	W B G	8	SE405
160mm	G	4	SE605



## STRAIGHT COUPLING - Triple socket

Size	Colour	Qty	Part no.
110mm	G	4	SE402



## SHORT RADIUS BEND - 87½°

Size	Colour	Qty	Part no.
82mm	B G	20	SB31
110mm	W B G	4	SB41
160mm	G	1	SFB61

Push-fit socket/spigot



## SHORT RADIUS BEND - 45°

Size	Colour	Qty	Part no.
82mm	B G	20	SB35
110mm	W B G	4	SB45
160mm	G	1	SFB65

Push-fit socket/spigot

## SHORT RADIUS BEND

Size	Colour	Qty	Part no.
10°			
110mm	W B G	4	SB410
20°			
110mm	W B G	4	SB420
30°			
110mm	W B G	4	SB430

Push-fit socket/spigot



## SHORT RADIUS BEND - 87½°

Size	Colour	Qty	Part no.
110mm	B G	4	SB411

Double push-fit socket



## ADJUSTABLE BEND - 11° - 87½°

Size	Colour	Qty	Part no.
82mm	B G	10	SB37



## ADJUSTABLE BEND - 5° - 14°

Size	Colour	Qty	Part no.
110mm	G	4	SB46



## ADJUSTABLE BEND - 21° - 90°

Size	Colour	Qty	Part no.
110mm	B G	4	SB47



## ADJUSTABLE BEND - 31° - 90°

Size	Colour	Qty	Part no.
160mm	G	2	SB67



## OFFSET BEND - 67½°

Size	Colour	Qty	Part no.
82mm	B G	30	SNE300
160mm	G	1	SNE600

Push-fit solvent socket



## OFFSET BEND - 67½°

Size	Colour	Qty	Part no.
110mm	W B G	4	SNE405

Push-fit solvent socket



## EQUAL BRANCH - 87½°

Size	Colour	Qty	Part no.
110mm	W B G	4	SY401
160mm	G	2	SY601



## EQUAL BRANCH - 45°

Size	Colour	Qty	Part no.
82mm	G	10	SY36
110	B G	4	SY460
160mm	G	2	SY63

Push-fit sockets/spigot

# Marley PVC Soil and Waste

Push-fit soil

Key to symbols and colours: W: White B: Black G: Grey AG: Anthracite Grey BR: Brown NU: Neutral V: Vandyke Brown  
FF: Foundry Finish ♡ Kitemark certified product 🏠 BBA certified product



## EQUAL BRANCH - 45°

Size	Colour	Qty	Part no.
110mm	B G	4	SY466

Push-fit sockets/spigot



## FIVE BOSS BRANCH - 87½° spigot

Size	Colour	Qty	Part no.
110mm ♡	W B G	4	SY405

Push-fit sockets/spigot



## FIVE BOSS BRANCH - 87½° solvent socket

Size	Colour	Qty	Part no.
110mm ♡	B G	4	SY415

Push-fit sockets/solvent socket



## THREE BOSS BRANCH - 87½°

Size	Colour	Qty	Part no.
82mm ♡	B G	10	SY33F



## UNEQUAL BRANCH - 87½°

Size	Colour	Qty	Part no.
160x110 mm ♡ G		2	SY64

Push-fit sockets/spigot. 2 boss/access upstands



## UNEQUAL BRANCH - 45°

Size	Colour	Qty	Part no.
160x110mm	G	1	SY66

Push-fit sockets/spigot



## DOUBLE BRANCH - 87½°

Size	Colour	Qty	Part no.
110mm ♡	B G	4	SY404

Push-fit sockets/spigot. 4 boss upstands



## CORNER BRANCH - 87½°

Size	Colour	Qty	Part no.
110mm ♡	G	1	SY411

Push-fit sockets/spigot



## BOSS PIPE - 87½°

Size	Colour	Qty	Part no.
82mm ♡	B G	15	SW30

Push-fit socket/spigot. 3 boss upstands, 1 drilled



## BOSS PIPE - 87½°

Size	Colour	Qty	Part no.
110mm ♡	W B G	4	SW41

Push-fit socket/spigot. One 40mm boss connection



## BOSS PIPE - 87½°

Size	Colour	Qty	Part no.
110mm ♡	B G	4	SW415

Push-fit socket/spigot. One 32mm boss connection



## BOSS PIPE

Size	Colour	Qty	Part no.
110mm ♡	W B G	4	SW40

Push-fit socket/spigot. 4 boss upstands



## ACCESS PIPE - Solvent socket

Size	Colour	Qty	Part no.
82mm ♡	B G	15	SF31



## ACCESS PIPE - Socket/spigot

Size	Colour	Qty	Part no.
110mm ♡	W B G	4	SF41



## REAR ACCESS BEND - 87½°

Size	Colour	Qty	Part no.
82mm	B G	1	SB38



## REAR ACCESS BEND - 87½° Push-fit socket/spigot

Size	Colour	Qty	Part no.
110mm ♡	B G	4	SB42

# Marley PVC Soil and Waste

Push-fit soil



## REAR ACCESS BRANCH - 87½°

Size	Colour	Qty	Part no.
82mm	B G	1	SY34F



## REAR ACCESS BRANCH

Size	Colour	Qty	Part no.
110mm	B G	4	SY402

2 boss upstands



## BOSS CONNECTOR - 87½°

Size	Colour	Qty	Part no.
32mm	W B G	50	SA411
40mm	W B G	40	SA421
50mm	B G	40	SA420

Solvent weld with push-fit seal



## LEVEL INVERT REDUCER

Size	Colour	Qty	Part no.
110x82mm	B G	20	SRM304
160x110mm	G	4	SRM604

Spigot/socket



## ADAPTOR - Soil to drain

Size	Colour	Qty	Part no.
110mm	B	1	SA42



## ADAPTOR - Waste to drain

Size	Colour	Qty	Part no.
110mm	B	1	SA110



## PIPE - 110mm co-ex soil

Size	Colour	Qty	Part no.
3m			
110mm	W B G	1	SL403
160mm	G	1	SL603
4m			
110mm	G	1	SP404
160mm	G	1	SP604

Double socket



## STRAIGHT COUPLING - Loose pipe socket

Size	Colour	Qty	Part no.
82mm	B G	10	SE300
110mm	W B G	8	SE400
160mm	G	4	SE600



## STRAIGHT COUPLING - Double solvent socket

Size	Colour	Qty	Part no.
82mm	G	50	SES301
110mm	B G	8	SES401
160mm	G	4	SES601



## EXPANSION COUPLING

Size	Colour	Qty	Part no.
110mm	B G	8	SE409
110mm	Clear	8	SE409CLR

To accommodate thermal movement in both vertical and horizontal solvent pipework



## SHORT RADIUS BENDS - 87½° Solvent socket/spigot

Size	Colour	Qty	Part no.
110mm	W B G	4	SBS41



## SHORT RADIUS BENDS - 87½°

Size	Colour	Qty	Part no.
110mm	W B G	4	SBS42



## SHORT RADIUS BENDS - 87½°

Size	Colour	Qty	Part no.
160mm	G	2	SBS62



# Marley PVC Soil and Waste

Solvent soil

Key to symbols and colours: W: White B: Black G: Grey AG: Anthracite Grey BR: Brown NU: Neutral V: Vandyke Brown  
 FF: Foundry Finish  Kitemark certified product  BBA certified product



## SHORT RADIUS BENDS - 45°

Size	Colour	Qty	Part no.
110mm	W B G	4	SBS45



## SHORT RADIUS BENDS - 45° Double socket/spigot

Size	Colour	Qty	Part no.
160mm	G	2	SBS65



## SHORT RADIUS BENDS - 45°

Size	Colour	Qty	Part no.
110mm	B G	4	SBS415

## SHORT RADIUS BENDS - 67½°

Size	Colour	Qty	Part no.
160mm	G	2	SBS615

Solvent socket/spigot



## LONG SPIGOT BEND - 87½°

Size	Colour	Qty	Part no.
110mm 	W B G	4	SBS40

Solvent socket/spigot



## OFFSET BEND - 67½°

Size	Colour	Qty	Part no.
82mm	B G	30	SNE300
160mm	G	1	SNE600

Push-fit solvent socket



## OFFSET BEND - 67½°

Size	Colour	Qty	Part no.
110mm	W B G	4	SNE405

Push-fit solvent socket



## EQUAL BRANCH - 87½°

Size	Colour	Qty	Part no.
160mm	G	2	SYS601

Triple solvent socket



## EQUAL BRANCH - 45°

Size	Colour	Qty	Part no.
110mm	B G	4	SYS460

Solvent sockets/spigot



## EQUAL BRANCH - 45°

Size	Colour	Qty	Part no.
110mm	B G	4	SYS466
160mm	G	4	SYS666

Triple solvent sockets



## FIVE BOSS BRANCH - 87½° Triple solvent sockets

Size	Colour	Qty	Part no.
110mm 	B G	4	SYS405



## FIVE BOSS BRANCH - 87½° Solvent socket/spigot

Size	Colour	Qty	Part no.
110mm 	B G	4	SY415



## UNEQUAL BRANCH - 87½°

Size	Colour	Qty	Part no.
160x110mm	G	4	SYS664



## UNEQUAL BRANCH - 45°

Size	Colour	Qty	Part no.
160x110mm	G	4	SYS644



## DOUBLE BRANCH - 87½°

Size	Colour	Qty	Part no.
110mm 	G	1	SYS404

All solvent sockets, 4 boss upstands



## CORNER BRANCH

Size	Colour	Qty	Part no.
110mm 	G	1	SYS411

All solvent sockets



## BOSS PIPE - 45°

Size	Colour	Qty	Part no.
110mm 	G	4	SWS4135

All solvent sockets. Three 50mm boss upstands

# Marley PVC Soil and Waste

Solvent soil



## BOSS PIPES - 87½° 32mm boss connection

Size	Colour	Qty	Part no.
110mm	W B G	4	SWS415

Double solvent socket. One 32mm boss connection



## BOSS PIPES - 87½° 40mm boss connection

Size	Colour	Qty	Part no.
110mm	W B G	4	SWS41

Double solvent socket. One 40mm boss connection



## BOSS PIPE

Size	Colour	Qty	Part no.
110mm	B G	4	SWS42

Double solvent socket. One 50mm boss connection



## STRAP-ON BOSS - 90°

Size	Colour	Qty	Part no.
110 / 32mm	B G	40	SWS4150
110 / 40mm	B G	40	SWS410
110 / 50mm	B G	30	SWS420



## CONDENSATE STRAP-ON BOSS - 90°

Size	Colour	Qty	Part no.
110 / 21.5mm	G	50	SWS4C



## PATCH BOSS

Size	Colour	Qty	Part no.
32mm			
82mm	G	40	SWS332
40mm			
82mm	G	40	SWS340
50mm			
82mm	G	30	SWS350



## 8-WAY COLLAR BOSS - Solvent socket/spigot

Size	Colour	Qty	Part no.
110mm	G	1	SCB41



## 8-WAY COLLAR BOSS - Double solvent socket tail

Size	Colour	Qty	Part no.
110mm	G	1	SCBS41



## 8-WAY COLLAR BOSS - Solvent socket/spigot with 350mm spigot tail

Size	Colour	Qty	Part no.
110mm	G	1	SCBL41



## BOSS PIPE

Size	Colour	Qty	Part no.
110mm	B G	4	SWS40



## BOSS PIPE - Solvent socket/spigot

Size	Colour	Qty	Part no.
110mm	B G	4	SWS405

4 boss upstands, 1 drilled



## BOSS PIPE

Size	Colour	Qty	Part no.
110mm	G	1	SWS406



## BOSS PIPE - Double solvent socket

Size	Colour	Qty	Part no.
160mm	G	4	SWS60

4 boss upstands, 1 drilled



## BOSS PIPE - Solvent socket/spigot

Size	Colour	Qty	Part no.
160mm	G	1	SW60



## CONDENSATION TRAP

Size	Colour	Qty	Part no.
110mm	G	6	SCT4

With 21.5/22mm overflow connection



## SOCKET PLUG

Size	Colour	Qty	Part no.
110mm	W B G	35	SE43

# Marley PVC Soil and Waste

Solvent soil

Key to symbols and colours: W: White B: Black G: Grey AG: Anthracite Grey BR: Brown NU: Neutral V: Vandyke Brown  
 FF: Foundry Finish  Kitemark certified product  BBA certified product



## ACCESS CAP

Size	Colour	Qty	Part no.
82	B G	30	SE30
110	W B G	50	SE40
160	G	15	SE62

With pressure plug



## ACCESS PIPE - Double solvent socket

Size	Colour	Qty	Part no.
110	W B G	4	SFS41

3 boss upstands



## ACCESS PIPE - Double solvent socket

Size	Colour	Qty	Part no.
160	G	2	SF611



## REAR ACCESS BEND - 87½°

Size	Colour	Qty	Part no.
110	B G	4	SBS420

Double solvent socket



## BOSS CONNECTOR - 87½° Solvent weld with push-fit seal

Size	Colour	Qty	Part no.
32	W B G	50	SA411
40	W B G	40	SA421
50	B G	40	SA420



## BOSS CONNECTOR - 87½° Solvent weld with solvent weld joint

Size	Colour	Qty	Part no.
32	G	40	SA415
40	B G	40	SA425
50	G	50	SA435



## BOSS CONNECTOR - 87½° Solvent weld

Size	Colour	Qty	Part no.
40 	W B	20	KBK25
50	W B	10	KBK35



## ECCENTRIC REDUCER - 82-50

Size	Colour	Qty	Part no.
82-50	B G	90	SRM30

Solvent socket to boss upstand



## ECCENTRIC REDUCER - 110-50

Size	Colour	Qty	Part no.
110-50	B G	10	SRM402

Solvent socket to boss upstand



## ECCENTRIC REDUCER - 110-50

Size	Colour	Qty	Part no.
110-82	G	6	SRS304



## ECCENTRIC REDUCER - 160-110

Size	Colour	Qty	Part no.
160-110	G	6	SRS604

# Marley PVC Soil and Waste

Rigid WC connectors and manifold components



## STRAIGHT CONNECTOR - 14° Spigot

Size	Colour	Qty	Part no.
110mm	W	1	SG40



## STRAIGHT CONNECTOR - 14° Solvent socket

Size	Colour	Qty	Part no.
110mm	W	1	SGS41W*

Pan socket to be trimmed to suit WC spigot



## BENT CONNECTOR - 90° Solvent socket

Size	Colour	Qty	Part no.
110mm	W	4	ST40



## BENT CONNECTOR - 90° Long spigot

Size	Colour	Qty	Part no.
110mm	W	4	ST41W



## BENT CONNECTORS - 85° Solvent socket

Size	Colour	Qty	Part no.
110mm	W	4	STS41W*

Pan socket to be trimmed to suit WC spigot



## BENT CONNECTORS - 90° Long spigot/solvent socket

Size	Colour	Qty	Part no.
110mm	W	4	SBS40W



## WC SEAL AND CAP

Size	Colour	Qty	Part no.
83 - 114mm outlet	W	70	SA323W

For use with SGS41 and STS41  
Universal push-fit WC connectors



## STRAIGHT CONNECTOR

Size	Colour	Qty	Part no.
100mm	W	24	SWC11



## STRAIGHT CONNECTOR - 14°

Size	Colour	Qty	Part no.
100mm	W	20	SWCB14



## STRAIGHT CONNECTOR - 22°

Size	Colour	Qty	Part no.
100mm	W	24	SWC22



## LONG BENT CONNECTOR - 90°

Size	Colour	Qty	Part no.
100mm	W	10	SWCB90



## EXTENSION PIECE

Size	Colour	Qty	Part no.
100mm	W	12	SWCE33



## BRANCH

Size	Colour	Qty	Part no.
110x90mm	W	10	SM41W

Solvent sockets



## ADJUSTABLE WC BEND - 50° - 90°

Size	Colour	Qty	Part no.
90mm	W	15	SM42W*

50mm boss upstand. Pan socket to be trimmed to suit WC spigot



## ADJUSTABLE SPIGOT BEND - 50° - 90°

Size	Colour	Qty	Part no.
90mm	W	15	SM43W

50mm boss upstand



## WC CONNECTOR

Size	Colour	Qty	Part no.
90mm	W	30	SM44W*

Solvent socket. Pan socket to be trimmed to suit WC spigot

# Marley PVC Soil and Waste

Rigid WC connectors and manifold components



## EXTENSION PIPE

Size	Colour	Qty	Part no.
110x90mm	W	50	SM45W

300mm. For use with SM43 only

**Key to symbols and colours:** W: White B: Black G: Grey AG: Anthracite Grey BR: Brown NU: Neutral V: Vandyke Brown  
 FF: Foundry Finish ♡ Kitemark certified product 🏠 BBA certified product

## Accessories



## SOCKET CLIP

Size	Colour	Qty	Part no.
110	B G	50	SC41
160	G	50	SC61

PVC coated mild steel including nut and bolt



## BARREL CLIP COLLAR

Size	Colour	Qty	Part no.
1000	G	25	SC621

Converts socket clip to pipe clip



## PIPE CLIP

Size	Colour	Qty	Part no.
82 ♡	B G	20	SC35
110	W B G	50	SC45

PVCu



## PIPE CLIP

Size	Colour	Qty	Part no.
82 ♡	B G	20	SC35S

For use with drive-in spike or backplate



## DRIVE-IN-SPIKE

Colour	Qty	Part no.
G	200	RSS1

Galvanised mild steel



## BACKPLATE

Colour	Qty	Part no.
W B G ♡	100	RCB300



## CONCENTRIC REDUCER

Size	Colour	Qty	Part no.
110-50 ♡	B G	18	SE41

Spigot to boss upstand



## DURGO AIR ADMITTANCE VALVE

Size	Colour	Qty	Part no.
50 🏠	W	32	SVD2*
82 🏠	G	18	SVD3*
110 🏠	G	18	SVD4

Durgo valve including polystyrene insulating hood

\*Can be fitted below flood level

BBA certified for use up to 10 storeys

\*When fitted to short WC pan spigots, pan socket should be trimmed to suit before SA323W (not supplied) is fitted. Push-fit WC connectors are manufactured to BS 5627

# Marley PVC Soil and Waste

Accessories



## ROOF COWL/VENT TERMINAL

Size	Colour	Qty	Part no.
110	W B G	10	SVC1



## VENT TERMINAL

Size	Colour	Qty	Part no.
50	W B G	30	RV225



## VENT TERMINAL

Size	Colour	Qty	Part no.
82	B G	30	SV321
110	W B G	60	SV42



## VENT TERMINAL

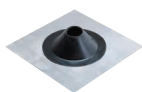
Size	Colour	Qty	Part no.
160	G	20	SV62



## WEATHERING COLLAR

Size	Colour	Qty	Part no.
82	B	100	SV31*
110	W B G	30	SV43

PVCu for solvent joint to pipe.  
\*Available in black rubber only.



## WEATHERING SLATES - Flat

Size	Colour	Qty	Part no.
400	G	5	SAS40



## WEATHERING SLATES - Inclined

Size	Colour	Qty	450
400	G	5	SAS45
610	G	5	SAS61



## SPARE RING SEALS - 'T' ring

Size	Qty	Part no.
82	5	SR82T
110	5	SR110T
160	5	SR160T

To BS EN 681/1



## TRAPPED FLOOR GULLIES

Size	Colour	Qty	Part no.
50mm	G	8	SFG42AS

Solvent outlet. 90mm adjustable water seal

Size	Colour	Qty	Part no.
82mm	G	8	SFG43AS

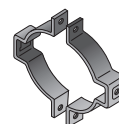
Solvent outlet. 75mm adjustable water seal



## STAINLESS STEEL TILE GRATE AND COVER

Size	Colour	Qty	Part no.
150x150mm	NU	1	SGG4

Grade 304 stainless steel



## TWO PIECE PIPE BRACKET

Size	Colour	Qty	Part no.
110mm	NU	1	JB42
160mm	NU	1	JB62



## DOUBLE SUPPORT BASE PLATE

Size	Colour	Qty	Part no.
110mm	NU	1	JBP42
160mm	NU	1	JBP62



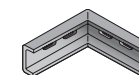
## CHANNEL STRIP

Size	Colour	Qty	Part no.
2m	NU	1	JCS2



## SINGLE SUPPORT BASE PLATE

Colour	Qty	Part no.
NU	1	JDP1



## CHANNEL STRIP ANGLE

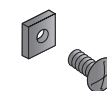
Colour	Qty	Part no.
NU	1	JCA1



## BARREL CLIP COLLAR

Colour	Qty	Part no.
G	1	SC621

1m PVC strip when cut to length converts pipe bracket to pipe size



## NUTS AND BOLTS

Size	Colour	Qty	Part no.
20mm x 6mm	NU	10	RNB11

# Marley PVC Soil and Waste

Foundry finish - Cast-iron effect soil

Key to symbols and colours: W: White B: Black G: Grey AG: Anthracite Grey BR: Brown NU: Neutral V: Vandyke Brown  
 FF: Foundry Finish  Kitemark certified product  BBA certified product



## PIPE-SOCKETED

Size	Colour	Qty	Part no.
2.75m	FF	1	CBS508

Push-fit socket



## SPIGOT ADAPTOR

Colour	Qty	Part no.
FF	1	CBS121

Simply push into existing Cast Iron, Clay or PVC pipework



## 92½° BEND

Colour	Qty	Part no.
FF	1	CBS322

Spigot tail



## 135° BEND

Colour	Qty	Part no.
FF	1	CBS331

Spigot tail



## 92½° BEND

Colour	Qty	Part no.
FF	1	CBS671

Double socket



## 135° BEND

Colour	Qty	Part no.
FF	1	CBS676

Double socket



## 92½° BEND

Colour	Qty	Part no.
FF	1	CBS334

Double socket



## BOSS PIPE

Colour	Qty	Part no.
FF	1	CBS244

Double socket



## BOSS ADAPTOR - Solvent only

Size	Colour	Qty	Part no.
32mm	B	10	BW104
40mm	B	10	BW106

To connect to CBS244



## BOSS ADAPTOR - Push-fit only

Size	Colour	Qty	Part no.
50mm	B	10	BS751

To connect with CBS244



## ACCESS SADDLE

Colour	Qty	Part no.
FF	1	CBS337

Double socket



## PIPE SUPPORT BRACKET

Colour	Qty	Part no.
FF	1	CBS219

2 screw fixing



## PIPE SUPPORT BRACKET

Colour	Qty	Part no.
FF	1	CBS220

2 screw fixing



## FITTING SOCKET BRACKET

Colour	Qty	Part no.
FF	1	CBS572

2 screw fixing



## VENT COWL

Colour	Qty	Part no.
FF	1	CBSV42

2 screw fixing



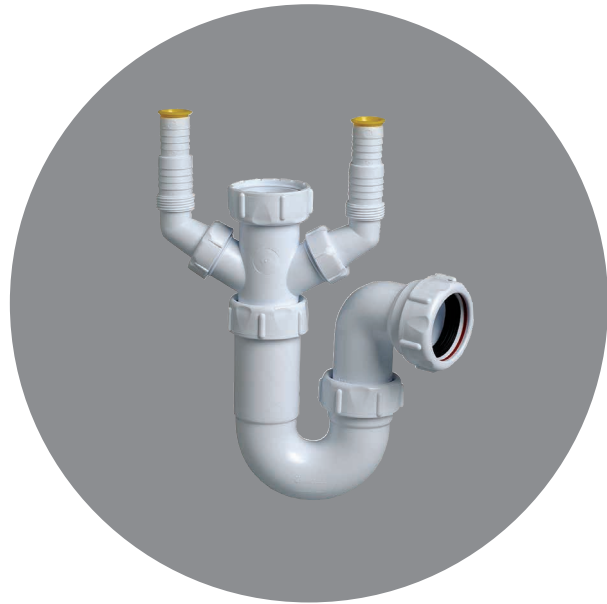
## VENT COWL

Colour	Qty	Part no.
FF	10	CBF001

2 screw fixing







# Multikwik

Traps



## BOTTLE – Standard

Size	Pack	Box	Part no.
32mm	10	50	B032
40mm	10	40	B040



## BOTTLE – Resealing

Size	Pack	Box	Part no.
32mm	10	50	B032R
40mm	10	40	B040R

Resealing function to prevent loss of water seal



## BOTTLE – Adjustable

Size	Pack	Box	Part no.
32mm	10	40	B032A
40mm	10	40	B040A

Adjustable inlet for installation flexibility  
Min height: 195mm; max height: 300mm



## BOTTLE – Adjustable/Resealing

Size	Pack	Box	Part no.
32mm	5	40	B032RA
40mm	5	30	B040RA

Resealing function to prevent loss of water seal  
Adjustable inlet for installation flexibility  
Min height: 195mm; max height: 300mm



## BOTTLE – Anti-vac

Size	Pack	Box	Part no.
32mm	10	50	B032V
40mm	10	50	B040V

Resealing function to prevent loss of water seal  
Anti-vac allows air to be drawn in to prevent self-syphonage of the water trap seal and gurgling



## BOTTLE – Compact

Size	Pack	Box	Part no.
32mm	5	65	B032S
40mm	5	50	B040S

Use when connecting into flat bottomed appliances that discharge into a gully



## BOTTLE – Slimline

Size	Pack	Box	Part no.
32mm	5	40	BS032

Space saving  
Adjustable inlet for installation flexibility  
Min height: 195mm; max height: 300mm



## STRAIGHT THROUGH ADJUSTABLE

Size	Pack	Box	Part no.
32mm	10	40	ST032

Unique slimline design, saving space  
Adjustable telescopic outlet for installation flexibility  
Easy to clean and maintain



## BOTTLE – Adjustable

Size	Pack	Box	Part no.
32mm	1	20	B032ACR

High quality mirror chrome finish  
Includes 400mm x 32mm chromed pipe  
Adjustable inlet for installation flexibility  
Min height: 195mm; max height: 300mm



## BOTTLE – Adjustable/Resealing

Size	Pack	Box	Part no.
32mm	1	40	B032RACR
40mm	1	40	B040RACR

High quality mirror chrome finish  
Adjustable inlet for installation flexibility  
Min height: 195mm; max height: 300mm  
Resealing function to prevent loss of water seal



## UNIVERSAL ALL IN ONE

Size	Pack	Box	Part no.
32mm	10	40	SP032

Adjustable inlet for installation flexibility  
Multi position outlet adjusts 360° providing installation flexibility  
Use as either an 'S' or 'P' trap



## RUNNING

Size	Pack	Box	Part no.
32mm	5	50	RP032
40mm	5	35	RP040
50mm	5	40	RP050X

Use to trap a range of appliances

# Multikwik

Traps



## 'P' TRAP

Size	Pack	Box	Part no.
32mm	10	60	P032
40mm	10	40	P040
50mm	5	50	P050

Use for horizontal pipework



## 'P' TRAP ADJUSTABLE

Size	Pack	Box	Part no.
32mm	10	50	P032A
40mm	10	40	P040A

Adjustable inlet for installation flexibility

Min height: 220mm; max height: 270mm



## 'S' TRAP

Size	Pack	Box	Part no.
40mm	10	60	S032
50mm	10	40	S040



## TUBULAR SWIVEL TRAP

Size	Pack	Box	Part no.
40mm	5	40	SWM040A

Adjustable inlet for installation flexibility

Inlet and outlet swivel to aid easy connection, even in confined areas



## SHOWER COMPACT

Size	Pack	Box	Part no.
40mm	10	40	S5040C

Chrome waste

70mm flange

High flow rate: 0.76 l/s



## SHOWER COMPACT

Size	Pack	Box	Part no.
40mm	10	40	S5040W

### Key to symbols and colours:

Resealing 
 Adjustasbtlaeble 
 Seal Depth 
 Chrome 
 Stainless Steel 
 White 
 BBA certified product



## SHALLOW SHOWER TRAP

Size	Pack	Box	Part no.
40mm	1	10	S5040CD

70mm flange



## SHALLOW SHOWER TRAP

Size	Pack	Box	Part no.
40mm	1	20	S9040CD

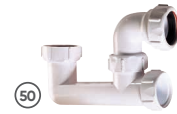
115mm flange



## BATH - One piece

Size	Pack	Box	Part no.
40mm	10	80	P1940

For ground floor appliances which discharge into a gully



## BATH - Low level

Size	Pack	Box	Part no.
40mm	10	40	P5040

Rodding point for cleaning



## BATH - Low level

Size	Pack	Box	Part no.
40mm	5	80	P5040V

Rodding point for cleaning

Anti-vac allows air into the waste pipe to prevent self-syphonage of the water trap seal and gurgling

# Multikwik

Traps



## BATH – Swivel 'P' low level

Size	Pack	Box	Part no.
40mm	5	40	P040L



## BATH – Swivel 'P' low level

Size	Pack	Box	Part no.
40mm	5	35	P6040

Rodding point for cleaning



## BATH – Low level

Size	Pack	Box	Part no.
40mm	1	20	P5040F

Flexible overflow pipe for ease of installation

Plug tidy overflow to retain plug when not in use



## BATH – Standard

Size	Pack	Box	Part no.
40mm	5	40	P6040F

Flexible overflow pipe for ease of installation

Plug tidy overflow to retain plug when not in use



## ANTI-VAC GURGLE MASTER

Size	Pack	Box	Part no.
32mm	10	150	WV032
40mm	10	100	WV040

Anti-vac allows air into the waste pipe to prevent self-syphonage of the water trap seal and gurgling  
Quick installation with simple multifit-in-line assembly  
Install within 150mm of the trap



## ANTI SYPHON UNIT

Size	Pack	Box	Part no.
32mm	10	250	WV150
40mm	10	250	WV151

Anti-vac allows air into the waste pipe to prevent self-syphonage of the water trap seal and gurgling  
Use with any BS EN 1566/5255 solvent weld sockets  
To BS EN 12380



## WASHING MACHINE

Size	Pack	Box	Part no.
40mm	5	30	PWM040

Includes 500mm standpipe, retaining clips, screws and raw plugs



## UTILITY 'P' COMPACT – Single nozzle

Size	Pack	Box	Part no.
40mm	10	60	PWM040T

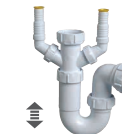
Nozzle for connecting a washing machine or dishwasher



## ADJUSTABLE UTILITY 'P' – Single nozzle

Size	Pack	Box	Part no.
40mm	10	30	PWM040S

Adjustable inlet for installation flexibility  
For connecting a washing machine or dishwasher  
Non-return valve to prevent backflow in nozzle  
Min height: 250mm; max height: 310mm



## ADJUSTABLE UTILITY 'P' – Double nozzle

Size	Pack	Box	Part no.
40mm	10	40	PWM040D

Adjustable inlet for installation flexibility  
Non-return valve to prevent backflow in nozzle  
Min height: 250mm; max height: 310mm  
For connecting two appliances



## ADJUSTABLE UTILITY 'S' – Single nozzle

Size	Pack	Box	Part no.
40mm	10	30	SWM040S

Adjustable inlet for installation flexibility  
Non-return valve to prevent backflow in nozzle  
Min height: 250mm; max height: 310mm  
For connecting a washing machine or dishwasher



## ADJUSTABLE UTILITY 'S' – Double nozzle

Size	Pack	Box	Part no.
40mm	10	25	SWM040D

Adjustable inlet for installation flexibility  
Non-return valve to prevent backflow in nozzle  
Min height: 250mm; max height: 330mm  
For connecting two appliances



## SPACE SAVER KIT

Size	Pack	Box	Part no.
40mm	1	25	SBK040D

Single bowl, double nozzle  
Flexible installation with full width and height adjustment

# Multikwik

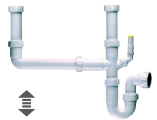
Traps



## 1½ BOWL KIT – Single nozzle

Size	Pack	Box	Part no.
40mm	1	35	XSB040S

Flexible installation with full width and height adjustment



## DOUBLE BOWL KIT – Single nozzle

Size	Pack	Box	Part no.
40mm	1	30	DBK040S

Flexible installation with full width and height adjustment



## EXTENDED DOUBLE BOWL KIT – double nozzle

Size	Pack	Box	Part no.
40mm	1	25	DBKDS040

Flexible installation with full width and height adjustment



## TRAP HEIGHT ADJUSTER – Single nozzle

Size	Pack	Box	Part no.
40mm	5	90	WA040S

Non-return valve prevents backflow in nozzle  
For connecting a washing machine or dishwasher



## SPACE SAVER

Size	Pack	Box	Part no.
40mm	5	30	SBSK040

Trap not included  
Space saving design: Pushes the trap and pipework to the back of the cupboard



## NOZZLE - Angled

Size	Pack	Box	Part no.
40mm	10	300	NK001

Non-return valve to prevent backflow in nozzle  
Nozzle can be cut to suit a variety of applications  
To suit 1" & ¾" hose diameter



## NOZZLE – Straight

Size	Pack	Box	Part no.
40mm	10	300	NKT001

Use with 40mm compression waste appliance hose connection



## WASHING MACHINE TEE

Size	Pack	Box	Part no.
40mm	1	100	WMT001

1½ BSP sink waste connection  
Can be inserted between an existing trap and outlet

### Key to symbols and colours:

Resealing 
 Adjustable 
 Seal Depth 
 Chrome 
 Stainless Steel 
 White 
 BBA certified product



## FLEXIBLE CONNECTOR

Size	Pack	Box	Part no.
40/32mm	1	1	WW170

350mm length. Cut ends to suit compression fittings



## WASHING MACHINE – HOSE 1.5M

Size	Pack	Box	Part no.
40mm	1	1	WW171

Non kink hose with rest support for reliable installation



## BASIC SINK WASTE AND OVERFLOW STANDARD KIT

Size	Pack	Box	Part no.
40mm	1	20	CWS01

Extendible overflow to suit various overflow heights  
Flexible overflow pipe



## BATH WASTE AND OVERFLOW STANDARD KIT

Size	Pack	Box	Part no.
40mm	1	20	CWB01

Extendible overflow to suit various overflow heights  
Flexible overflow pipe



## BATH WASTE AND OVERFLOW KIT

Size	Pack	Box	Part no.
40mm	5	40	W040F

Extendible overflow to suit various overflow heights  
Flexible overflow pipe  
Plug tidy overflow to retain the plug when not in use



## BATH WASTE AND OVERFLOW KIT

Size	Pack	Box	Part no.
40mm	1	5	WPU040C

Extendible overflow to suit various overflow heights  
Flexible overflow pipe, includes pop up waste



## BATH WASTE AND OVERFLOW KIT

Size	Pack	Box	Part no.
40mm	5	40	W4070RF

Extendible overflow to suit various overflow heights  
Flexible overflow pipe



## SLOTTED BASIN WASTE OUTLET

Size	Pack	Box	Part no.
32mm	1	40	SBW01

Includes polyplug, chain and stay  
Slotted – for basins with an integral overflow

# Multikwik

Compression Waste / Pipes & Fittings



## OVERFLOW CONDENSE ADAPTOR

Size	Pack	Box	Part no.
40mm	1	400	EB40R

Adapts to condense pipework  
Connects 40mm to 16.5 – 24mm



## MULTIFLEX BEND

Size	Pack	Box	Part no.
32mm	1	50	MFW32
40mm	1	50	MFW40

Adjustable from 0 – 90° to meet the demands of almost any installation



## REDUCER

Size	Pack	Box	Part no.
40/32mm	1	200	WP124
50/40mm	1	130	WP225



## STRAIGHT COUPLING

Size	Pack	Box	Part no.
32mm	1	280	WP114
40mm	1	220	WP115
50mm	1	90	WP216



## 90° BEND

Size	Pack	Box	Part no.
32mm	1	200	WP120
40mm	1	150	WP121
50mm	1	112	WP222



## 135° BEND

Size	Pack	Box	Part no.
32mm	1	230	WP126
40mm	1	180	WP127
50mm	1	70	WP218



## 92.5° TEE

Size	Pack	Box	Part no.
32mm	1	120	WP128
40mm	1	80	WP129
50mm	1	80	WP230



## PIPE – Chrome

Size	Pack	Box	Part no.
400mm			
40mm	1	10	WP101C
50mm	1	10	WP102C
1.1m			
40mm	1	10	WP105C
50mm	1	10	WP106C

High quality mirror chrome finish



## STRAIGHT COUPLING – Chrome

Size	Pack	Box	Part no.
32mm	1	100	WP114C
40mm	1	80	WP115C

High quality mirror chrome finish



## PIPE CLIP – Chrome

Size	Pack	Box	Part no.
32mm	3	250	WP141C
40mm	3	250	WP142C

Price is for a pack of 3

High quality mirror chrome finish



## 90° BEND – Chrome

Size	Pack	Box	Part no.
32mm	1	100	WP120C
40mm	1	80	WP121C

High quality mirror chrome finish



## 92.5° TEE – Chrome

Size	Pack	Box	Part no.
40mm	1	40	WP129C

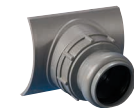
High quality mirror chrome finish



## PIPE COVER – Chrome

Size	Pack	Box	Part no.
32mm	1	200	WP153C
40mm	1	200	WP154C

High quality mirror chrome finish



## EASY BOSS CONNECTOR - 32/40mm

Size	Pack	Box	Part no.
Grey			
110mm	1	30	MKEB4032G
Black			
110mm	1	30	MKEB4032B

For connection (push fit or solvent weld) to 110mm soil stacks



## STRAIGHT

Size	Pack	Box	Part no.
------	------	-----	----------

WC spigot outer diameter: 97–108mm  
Soil pipe inner diameter: 99–105mm

This connector is for new style pans only



## EXTENDED STRAIGHT

Size	Pack	Box	Part no.
------	------	-----	----------

WC spigot outer diameter: 97–108mm  
Soil pipe inner diameter: 99–105mm



## LONG ADJUSTABLE STRAIGHT

Size	Pack	Box	Part no.
------	------	-----	----------

WC spigot outer diameter: 97–108mm  
Soil pipe inner diameter: 99–105mm

This connector is for new style pans only



## STRAIGHT – Including vent boss

Size	Pack	Box	Part no.
------	------	-----	----------

WC spigot outer diameter: 97–108mm  
Soil pipe inner diameter: 99–105mm

40mm boss



## 18MM OFFSET

Size	Pack	Box	Part no.
------	------	-----	----------

WC spigot outer diameter: 97–108mm  
Soil pipe inner diameter: 99–105mm



## 40MM OFFSET

Size	Pack	Box	Part no.
------	------	-----	----------

WC spigot outer diameter: 97–108mm  
Soil pipe inner diameter: 99–105mm



## MULTICLIK – Flexible straight

Size	Pack	Box	Part no.
------	------	-----	----------

WC spigot outer diameter: 97–108mm  
Soil pipe inner diameter: 99–105mm

Extends from 255 to 550mm

Ideal when installing back to the wall, floor standing pans



## MULTICLIK 90° BEND

Size	Pack	Box	Part no.
------	------	-----	----------

WC spigot outer diameter: 97–108mm  
Soil pipe inner diameter: 99–105mm

Extends from 375 to 710mm

Converts a 'P' trap into an 'S' trap with adjustment for final connection



## MULTICLIK 90° BEND - Including vent boss

Size	Pack	Box	Part no.
------	------	-----	----------

WC spigot outer diameter: 97–108mm  
Soil pipe inner diameter: 99–105mm

Extends from 405 to 740mm

Converts a 'P' trap into an 'S' trap with adjustment for final connection

Must be used in a vertical position if venting boss is being used



## 14° BEND

Size	Pack	Box	Part no.
------	------	-----	----------

WC spigot outer diameter: 97–108mm  
Soil pipe inner diameter: 99–105mm



## 45° BEND

Size	Pack	Box	Part no.
------	------	-----	----------

WC spigot outer diameter: 97–108mm  
Soil pipe inner diameter: 99–105mm

Ideal for corner installations



## 104° BEND

Size	Pack	Box	Part no.
------	------	-----	----------

WC spigot outer diameter: 97–108mm  
Soil pipe inner diameter: 99–105mm



## 90° BEND

Size	Pack	Box	Part no.
------	------	-----	----------

WC spigot outer diameter: 97–108mm  
Soil pipe inner diameter: 99–105mm

# Multikwik

WC Connectors / Modern and cast iron



## 90° BEND – Including vent boss

Size	Pack	Box	Part no.
WC spigot outer diameter: 97–108mm Soil pipe inner diameter: 99–105mm	1	15	MKBB2190
40mm venting boss			
Must be used in a vertical position if venting boss is being used			



## 90° BEND – Tall

Size	Pack	Box	Part no.
WC spigot outer diameter: 97–108mm Soil pipe inner diameter: 99–105mm	3	15	MKB3190



## 90° BEND – Including vent boss

Size	Pack	Box	Part no.
WC spigot outer diameter: 97–108mm Soil pipe inner diameter: 99–105mm	1	10	MKBB3190
Includes 40mm compression venting boss			
Must be used in a vertical position if venting boss is being used			



## 90° SPACE SAVER BEND

Size	Pack	Box	Part no.
WC spigot outer diameter: 97–108mm Soil pipe inner diameter: 99–105mm	1	12	MKBAR90
Can be cut to suit both horizontally and vertically			
Ideal when replacing old BS1213 'S' trap pans			



## RIGID 18MM OFFSET

Size	Pack	Box	Part no.
WC spigot outer diameter: 97–108mm Soil pipe inner diameter: 99–105mm	1	30	MKRO2



## RIGID 14° BEND

Size	Pack	Box	Part no.
WC spigot outer diameter: 97–108mm Soil pipe inner diameter: 99–105mm	1	30	MKRB14



## RIGID 90° BEND

Size	Pack	Box	Part no.
WC spigot outer diameter: 97–108mm Soil pipe inner diameter: 99–105mm	1	15	MKRB90
Adjustable length: remove lined seal with a fine tooth saw and cut			



## RIGID STRAIGHT

Size	Pack	Box	Part no.
WC spigot outer diameter: 97–108mm Soil pipe inner diameter: 99–105mm	1	30	MKRS2



## RIGID 100MM OFFSET

Size	Pack	Box	Part no.
WC spigot outer diameter: 97–108mm Soil pipe inner diameter: 99–105mm	1	20	MKO100



## EXTENDED STRAIGHT – For 3½” soil

Size	Pack	Box	Part no.
WC spigot outer diameter: 97–108mm Soil pipe inner diameter: 88–92mm	1	20	MKS7
Extension length: 15mm			



## 18MM OFFSET – For 3½” soil

Size	Pack	Box	Part no.
WC spigot outer diameter: 97–108mm Soil pipe inner diameter: 88–92mm	1	30	MK07



## 14° BEND – For oversize soil

Size	Pack	Box	Part no.
WC spigot outer diameter: 97–108mm Soil pipe inner diameter: 105–108mm	1	30	MKB114S





## STRAIGHT

Size	Pack	Box	Part no.
------	------	-----	----------

WC spigot outer diameter: 108–114mm  
Soil pipe inner diameter: 99–105mm

5 30 MKS1

This connector is for old style pans only



## STRAIGHT – Old BS1213 syphonic pan

Size	Pack	Box	Part no.
------	------	-----	----------

WC spigot outer diameter: 108–114mm  
Soil pipe inner diameter: 99–105mm

1 30 MKS1



## 18MM OFFSET – Old BS1213 pan

Size	Pack	Box	Part no.
------	------	-----	----------

WC spigot outer diameter: 108–114mm  
Soil pipe inner diameter: 99–105mm

5 30 MKO1



## 90° TIGHT KNUCKLE BEND – Old BS1213 pan

Size	Pack	Box	Part no.
------	------	-----	----------

WC spigot outer diameter: 108–114mm  
Soil pipe inner diameter: 99–105mm

1 20 MKB21

### Key to symbols and colours:

Resealing 
 Adjustable 
 Seal Depth 
 Chrome 
 Stainless Steel 
 White 
 BBA certified product



## 90° BEND – Old BS1213 pan

Size	Pack	Box	Part no.
------	------	-----	----------

WC spigot outer diameter: 108–114mm  
Soil pipe inner diameter: 99–105mm

1 15 MKB22



## STRAIGHT – For 3 1/2" soil

Size	Pack	Box	Part no.
------	------	-----	----------

WC spigot outer diameter: 108–114mm  
Soil pipe inner diameter: 88–92mm

1 30 MKS3



## 18MM OFFSET

Size	Pack	Box	Part no.
------	------	-----	----------

WC spigot outer diameter: 108–114mm  
Soil pipe inner diameter: 88–92mm

1 30 MKO3

Suitable old BS1213 pans to 3 1/2" soil



## STRAIGHT – For 3 1/2" soil

Size	Pack	Box	Part no.
------	------	-----	----------

WC spigot outer diameter: 108–114mm  
Soil pipe inner diameter: 74–77mm

1 20 MKS10



## 90° TIGHT KNUCKLE BEND

Size	Pack	Box	Part no.
------	------	-----	----------

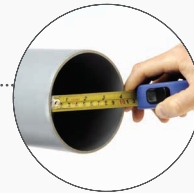
WC spigot outer diameter: 108–114mm  
Soil pipe inner diameter: 105–108mm

1 20 MKB21S

## TRUST MULTIKWIK

Selecting the right **WC CONNECTOR**:

Measure the **INNER** diameter of your pipe

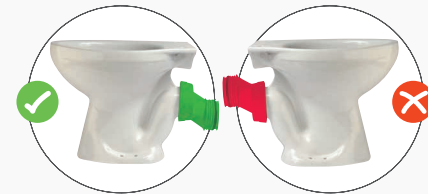


Measure the **OUTER** diameter of your spigot

Then take a look at the dimensions provided for the individual connectors to find the best matches!

Selecting the right **OFFSET**:

Measure from the centre line of your pipe to the centre line of your WC spigot.



**Remember**, offsets should not be installed in an upwards position. Water should be able to run horizontally or down.



## STRAIGHT – Undersize spigot

Size	Pack	Box	Part no.
------	------	-----	----------

WC spigot outer diameter: 76–95mm  
Soil pipe inner diameter: 99–105mm

1	40	MKS5
---	----	------



## EXTENDED STRAIGHT – Undersize spigot

Size	Pack	Box	Part no.
------	------	-----	----------

WC spigot outer diameter: 76–95mm  
Soil pipe inner diameter: 99–105mm

1	24	MKS8
---	----	------

Extension length: 59mm



## 18MM OFFSET – Undersize spigot

Size	Pack	Box	Part no.
------	------	-----	----------

WC spigot outer diameter: 76–95mm  
Soil pipe inner diameter: 99–105mm

1	30	MKO5
---	----	------



## 14° BEND – Undersize spigot

Size	Pack	Box	Part no.
------	------	-----	----------

WC spigot outer diameter: 76–95mm  
Soil pipe inner diameter: 99–105mm

1	30	MKB514
---	----	--------



## 14° BEND – Undersize spigots to 3 1/2" soil

Size	Pack	Box	Part no.
------	------	-----	----------

WC spigot outer diameter: 76–95mm  
Soil pipe inner diameter: 88–92mm

1	30	MKB614
---	----	--------

## Ancillaries



## SOIL PIPE EXTENSION – For 4" soil

Size	Pack	Box	Part no.
------	------	-----	----------

Soil pipe inner diameter: 99–105mm

5	20	MKEA
---	----	------

Can be cut to required length

Ideal for replacing 4" cast iron, clay and PVCu



## SOIL PIPE EXTENSION – For 3 1/2" soil

Size	Pack	Box	Part no.
------	------	-----	----------

Soil pipe inner diameter: 88–92mm

5	20	MKEB
---	----	------

Can be cut to required length

Ideal for replacing 3 1/2" cast iron



## SOIL PIPE EXTENSION – For 3" soil

Size	Pack	Box	Part no.
------	------	-----	----------

Soil pipe inner diameter: 74–77mm

1	20	MKEG
---	----	------

Can be cut to required length

Ideal for replacing 3" cast iron



## RIGID SOIL PIPE EXTENSION

Size	Pack	Box	Part no.
------	------	-----	----------

WC spigot outer diameter: 97–108mm  
Soil pipe inner diameter: 99–105mm

1	20	MKREXT
---	----	--------

Adjustable length: remove finned seal and cut with a fine tooth saw



## FLUSH PIPE CONNECTOR

Size	Pack	Box	Part no.
------	------	-----	----------

n/a

1	50	MKFPC1
---	----	--------



## MULTILINK

Size	Pack	Box	Part no.
------	------	-----	----------

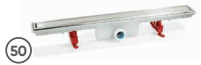
n/a

1	50	MKL1
---	----	------

For connecting 2 or more pan connectors

# Multikwik

Floor Drainage / Linnum / Shower gullies



## LINNUM – Shower drain body

Size	Box	Part no.
650mm	1	L13560
750mm	1	L13570
950mm	1	L13590

Water seal depth: 50mm

Min. height: 115mm; Max. height: 131mm For tiled flooring



## LINNUM – Soft floor grate

Size	Box	Part no.
650mm	1	L13565
750mm	1	L13575
950mm	1	L13595



## LINNUM – Elegance floor grate

Size	Box	Part no.
650mm	1	L13566
950mm	1	L13595



## LINNUM – Bubble floor grate

Size	Box	Part no.
950mm	1	L13599



## LINNUM – Shower grid frame – spare

Size	Box	Part no.
950mm	1	TRL430

Stainless steel



## LINNUM – Shower clamping frame – Spare

Size	Box	Part no.
950mm	1	TRL436

For use with floor thickness spacer (TRL478)

### Key to symbols and colours:

Resealing 
 Audstjuasbtlaeble 
 Seal Depth 
 Chrome 
 Stainless Steel 
 White 
 BBA certified product



## SHOWER GULLY – Horizontal/steel

Size	Pack	Part no.
50mm seal depth		
50mm	1	SG50SHV
75mm seal depth		
50mm	1	SG75SHV

Vinyl flooring



## SHOWER GULLY – Vertical/steel

Size	Pack	Part no.
50mm seal depth		
50mm	1	SG50SV
75mm seal depth		
50mm	1	SG75SV

Vinyl flooring



## SHOWER GULLY – Horizontal ABS

Size	Pack	Part no.
50mm seal depth		
50mm	1	SG50WHV
75mm seal depth		
50mm	1	SG75WHV

Vinyl flooring



## SHOWER GULLY – Vertical ABS

Size	Pack	Part no.
50mm seal depth		
50mm	1	SG50WVV
75mm seal depth		
50mm	1	SG75WVV

Vinyl flooring

# Multikwik

Shower gullies



## SHOWER GULLY – Vertical

Size	Pack	Part no.
50mm seal depth		
50mm	1	SG50VT
75mm seal depth		
50mm	1	SG75VT

Requires 'Grate and Riser' set  
Tiled flooring



## SHOWER GULLY – Horizontal

Size	Pack	Part no.
50mm seal depth		
50mm	1	SG50HT
75mm seal depth		
50mm	1	SG75HT

Requires 'Grate and Riser' set  
Tiled flooring



## DUAL GRATE & RISER

Size	Box	Part no.
n/a	1	SG1T

Riser can be cut between 36.5-130mm  
Requires shower gully body  
Tiled flooring



## SQUARE GRATE & RISER

Size	Box	Part no.
n/a	1	SG2T

Riser can be cut between 36.5-130mm  
Requires shower gully body  
Tiled flooring



## CLASSIC GRATE & RISER

Size	Box	Part no.
n/a	1	SG3T

Riser can be cut between 36.5-130mm  
Requires shower gully body  
Tiled flooring



## CLASSIC VANDAL RESISTANT GRATE & RISER

Size	Box	Part no.
n/a	1	SG4T

Riser can be cut between 36.5-130mm  
Requires shower gully body  
Screwed anti-vandal grate  
Tiled flooring

Continuous channel



## CONTINUOUS CHANNEL

Size	Box	Part no.
500mm	1	L29142

For tiled flooring only



## 40/50MM HORIZONTAL OUTLET

Size	Box	Part no.
150mm	1	L29158

40/50mm horizontal outlet



## FLOOR THICKNESS SPACER – Spare

Size	Box	Part no.
n/a	1	TRL478

Pack of 12  
For use with Linnum shower clamping  
Accommodates three different heights



## OUTLET ADAPTOR

Size	Pack	Part no.
Linnum		
40mm	1	TRL487
50mm	1	TRL490
Continuous channel		
40mm	1	TRL489
50mm	1	TRL488

To BSEN1566/5255 solvent waste

# Multikwik

Spares and replacements



## MULTIFLUSH VALVE – 340mm Cable

Size	Box	Part no.
1½" BSP	10	MFV1C
2" BSP	10	MFV3C

Dual flush button

Includes MFVB7B chrome dual flush button



## MULTIFLUSH VALVE – 800mm Cable

Size	Box	Part no.
1½" BSP	10	MFV2C
2" BSP	10	MFV4C

Dual flush button

Includes MFVB7B chrome dual flush button

### Key to symbols and colours:

Reseating Audstjuasbtlaeble Seal Depth Chrome Stainless Steel White BBA certified product

# | Studor



# Studor

Two-way vent for septic tanks, water tanks and silos

## Key to symbols and colours:

O: Orange W: White B: Black G: Grey  Kitemark certified product  BBA certified product  Adoptable



### MAXI-FILTRA

Size	Colour	Part no.
110mm	B	8F-STU019-BLK



### MAXI-FILTRA CARTRIDGE

Size	Colour	Part no.
110mm	B	8F-STU022-YLW



### MAXI-FILTRA ALUMINIUM COVER

Size	Colour	Part no.
110mm 	N/A	99093



# Enhance your knowledge with our e-learning platform

## **Become an expert**

Learn about our solutions, their key features, benefits and applications, you can also brush up on the latest installation advice from our experts.

## **Featuring courses on:**

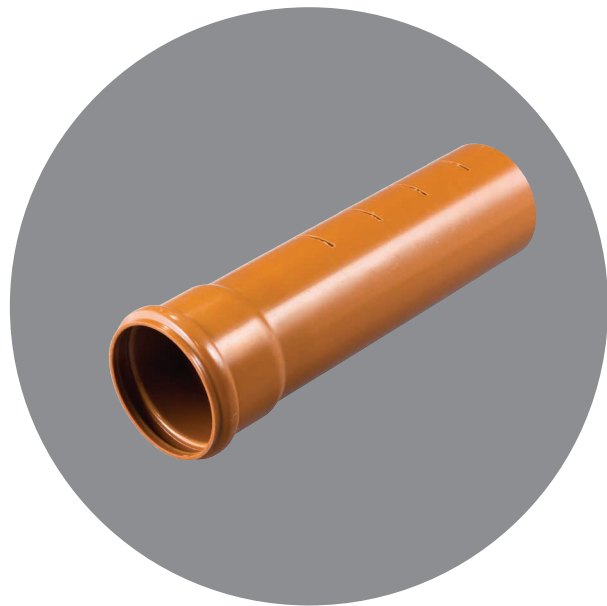
- Multikwik plumbing solutions
- Marley soil and waste systems
- Above and below ground drainage
- Vulcathene chemical drainage

**To register for free visit:**  
[aliaxisacademy.co.uk](http://aliaxisacademy.co.uk)





# | Marley Underground



# Marley Underground

Solid wall drainage systems



## PIPE - Double spigot

Size	Colour	Qty	Part no.
110mm x 3m		-	UL403
110mm x 6m		-	UL406
160mm x 6m		-	UL606



## PIPE - Push fit socket

Size	Colour	Qty	Part no.
110mm x 3m		-	UP403
110mm x 6m		-	UP406
160mm x 3m		-	UP603
160mm x 6m		-	UP606



## SLOTTED PIPE - Push fit socket

Size	Colour	Qty	Part no.
110mm x 6m		-	UPP406
Half slotted			



## STRAIGHT COUPLING - Push fit polypropylene

Size	Colour	Qty	Part no.
110mm		20	UE407

Supplied in U.V. resistant polythene bags



## STRAIGHT COUPLING - Push fit

Size	Colour	Qty	Part no.
110mm		8	UE406
160mm		4	UME15C



## STRAIGHT COUPLING - Push fit slip

Size	Colour	Qty	Part no.
110mm		8	UE405
160mm		4	UME16C



## STRAIGHT COUPLING - Loose pipe socket

Size	Colour	Qty	Part no.
110mm		8	UE400
160mm		4	UE600



## SHORT RADIUS BEND - Push-fit socket/spigot

Size	Colour	Qty	Part no.
110mm x 87½°		4	UB41
110mm x 45°		4	UB45
110mm x 30°		4	UB430
110mm x 20°		4	UB420
110mm x 10°		-	UB410
160mm x 87½°		-	UFB61
160mm x 45°		-	UFB65
160mm x 30°		-	UB69
160mm x 15°		-	UB68



## SHORT RADIUS BEND - Double push-fit socket

Size	Colour	Qty	Part no.
110mm x 87½°		4	UB411
110mm x 45°		4	UB455
110mm x 30°		4	UB4300
110mm x 20°		-	UB4200
110mm x 10°		-	UB4100
160mm x 87½°		-	UMB19C
160mm x 45°		-	UMB14C
160mm x 30°		-	UMB13C
160mm x 15°		-	UMB11C



## ADJUSTABLE BEND

Size	Colour	Qty	Part no.
110mm x 21°-90°		-	UB47
160mm x 15°-90°		-	UB67

Socket should be solvent welded

# Marley Underground

Solid wall drainage systems



## MULTIFLEX BEND\*

Size	Colour	Qty	Part no.
110mm x 0°-90°	○	-	USB110
110mm x 0°-90°	○	-	UDSB110

USB110 - single socket  
UDSB110 - double socket



## MECHANICAL BEND - 5°-30°

Size	Colour	Qty	Part no.
110mm  	○	-	UBL47M



## REST BEND - 87½°

Size	Colour	Qty	Part no.
110mm   	○	4	UBL488

Socket/socket



## LONG RADIUS BEND - 87½°

Size	Colour	Qty	Part no.
110mm	○	1	UBL42

Socket/socket, 200mm long












## LONG RADIUS BEND

Size	Colour	Qty	Part no.
110mm x 87½°	○	1	UBL41
110mm x 45½°	○	1	UBL45

456mm long



## EQUAL BRANCH - Socket/Spigot








Size	Colour	Qty	Part no.
82mm x 45°	○	10	UY36
110mm x 87½°   	○	4	UY401
110mm x 45°   	○	4	UY46
160mm x 87½°	○	2	UY601
160mm x 45°   	○	2	UY63

### Key to symbols and colours:

○: Orange W: White B: Black G: Grey  Kitemark certified product  BBA certified product  Adoptable



## EQUAL BRANCH - All socket

Size	Colour	Qty	Part no.
110mm x 87½°   	○	4	UY400
110mm x 45°   	○	4	UY466
160mm x 87½°	○	2	UMY13C
160mm x 45° 	○	2	UMY11C



## MULTIFLEX BRANCH - Double socket

Size	Colour	Qty	Part no.
110mm	○	4	UDSY110

Adjusts from 90° to 45°



## MULTIFLEX BRANCH - Treble socket

Size	Colour	Qty	Part no.
110mm	○	4	UTSY110

Adjusts from 90° to 45°



## UNEQUAL BRANCH - Socket/spigot

Size	Colour	Qty	Part no.
160x110mm x 87½°	○	2	UY64



Size	Colour	Qty	Part no.
160x110mm x 45°   	○	2	UY66



## UNEQUAL BRANCH - All socket

Size	Colour	Qty	Part no.
160x110mm x 87½° 	○	2	UMY12C





Size	Colour	Qty	Part no.
160x110mm x 45° 	○	2	UMY10C

# Marley Underground

Solid wall drainage systems



## STRAIGHT DOUBLE SPIGOT OPEN CHANNEL

Size	Colour	Qty	Part no.
110mm  	O	-	UCC4

1.5m long, with 600mm opening



## LONG RADIUS OPEN CHANNEL BEND - 87½°

Size	Colour	Qty	Part no.
110mm  	O	-	UCB48L

Socket/socket



## SLIPPER BEND - Left hand

Size	Colour	Qty	Part no.
110mm  	O	-	USB41






## SLIPPER BEND - Right hand

Size	Colour	Qty	Part no.
110mm  	O	-	USB42



## LEVEL INVERT REDUCER

Size	Colour	Qty	Part no.
110 x 82mm  	O	4	URM304
160 x 110mm  	O	4	URM604

Spigot/socket



## ADAPTOR

Size	Colour	Qty	Part no.
110mm	B	1	SA42

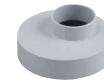
Soil to drain adaptor



## ECCENTRIC REDUCER

Size	Colour	Qty	Part no.
82 x 50mm	B G	90	SRM30*

Solvent socket to boss upstand



Size	Colour	Qty	Part no.
110 x 50mm	B G	10	SRM402*

Solvent socket to boss upstand



Size	Colour	Qty	Part no.
110 x 68mm	O	10	URM425

Solvent socket to 68mm downpipe



Size	Colour	Qty	Part no.
110mm	B	-	UA43
110mm	B	10	UA44

UA43 - universal waste to 110mm drain  
UA44 - dual 32/40mm to 110mm drain



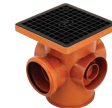
## CONCENTRIC REDUCER

Size	Colour	Qty	Part no.
110 x 50mm 	B G	-	SE41*

Spigot to boss upstand



Size	Colour	Qty	Part no.
110 x 68/65mm	B	100	UA42



## BOTTLE GULLY - Square top

Size	Colour	Qty	Part no.
110mm  	O	1	UG50

A15 loading  
Push fit socket outlet, three 110mm solvent weld inlets with 50mm boss upstands and rodding access



## BOTTLE GULLY - Square top

Size	Colour	Qty	Part no.
110mm	O	1	UG50D

With back inlet plugged

# Marley Underground

Solid wall drainage systems

Key to symbols and colours:

O: Orange W: White B: Black G: Grey  Kitemark certified product  BBA certified product  Adoptable



## BOTTLE GULLY - Circular top

Size	Colour	Qty	Part no.
110mm	O	2	UG54

Includes grid and rodding access. Supplied with removable back inlet plug



## BOTTLE GULLY RAISING PIECE

Size	Colour	Qty	Part no.
160mm x 350mm	O	4	UG52

For use with UG50 or UG50D



## BOTTLE GULLY GRID - Square

Size	Colour	Qty	Part no.
-	B	30	UG51
-	B	15	UG51SA

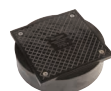
Spare, use with UG50 or UG50D  
UG51SA - sealed lid



## BOTTLE GULLY GRID - Circular

Size	Colour	Qty	Part no.
180mm Ø	B	25	UG55

Spare, use with UG54



## SEALED GULLY ACCESS LID

Size	Colour	Qty	Part no.
110mm	B	10	UG55SA

Spare, use with UG54



## BOTTLE GULLY BASE

Size	Colour	Qty	Part no.
110mm	O	1	UG53

Use with UG50, UG50D or UG54



## 'P' GULLY TRAP - 87½° outlet

Size	Colour	Qty	Part no.
110mm    O	O	3	UG42

Push-fit socket inlet, 87½° socket outlet



## GULLY TRAP

Size	Colour	Qty	Part no.
110mm    O	O	4	UG44

Solvent socket inlet, 45° spigot outlet



## RECTANGULAR HOPPER

Size	Colour	Qty	Part no.
110mm	O	4	UG47



## SQUARE HOPPER

Size	Colour	Qty	Part no.
110mm	O	4	UG48

Solvent socket, accepts 68mm downpipe inside larger boss with two 50mm boss upstands



## GRATING ASSEMBLY

Size	Colour	Qty	Part no.
110mm	O	30	UG45

Solvent socket



## SPARE GRATING

Size	Colour	Qty	Part no.
110mm	B	30	UG46

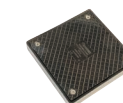
Suits UG47, UG48 and UG45



## SPARE BACK PLATE

Size	Colour	Qty	Part no.
110mm   B	B	80	UG49

Suits UG47



## SPARE SEALED COVER PLATE

Size	Colour	Qty	Part no.
152mm	B	10	UG43



## DRAIN LEAF GUARD

Size	Colour	Qty	Part no.
300mm x 265mm	B	15	UG41



## INLET RAISING PIECE

Size	Colour	Qty	Part no.
110mm	O	4	UW401

Four 50mm boss upstands

# Marley Underground

Solid wall drainage systems



## SILT TRAP

Size	Colour	Qty	Part no.
250mm	O	-	UG60



## INLET FILTER

Colour	Part no.
B	UG61

For use with UG60 silt trap



## YARD GULLY

Size	Colour	Qty	Part no.
600mm	B	-	UYG40

620mm deep x 320mm diameter, 110mm outlet



## GRATING AND FRAME FOR YARD GULLY

Part no.
UYG42

Ductile Iron Flat top to BS EN124 class B125, 12.5 tonnes. 325x325mm over grate



## ADAPTOR

Size	Colour	Qty	Part no.
110mm	B	1	UCA40

Socket/socket  
To suit thin wall clayware spigot pipe



## ADAPTOR

Size	Colour	Qty	Part no.
110mm	B	1	UCA41

Socket/socket  
To suit thick wall clayware pipe



## FLEXIBLE COUPLING

Size	Colour	Qty	Part no.
110mm	B	1	UCA42
160mm	B	1	UCA43

PVC to clay adaptor



## FLEXIBLE COUPLING

Size	Colour	Qty	Part no.
110mm	B	1	UCA44

PVC to PVC adaptor



## ANTI-FLOOD VALVE

Size	Colour	Qty	Part no.
110mm	B	-	USW130
160mm	B	-	USW140

Double flap, conforms to BS EN 13564



# Marley Underground

Solid wall drainage systems



## REAR ACCESS BEND - 87½°

Size	Colour	Qty	Part no.
110mm	O	4	UB42

Socket/spigot



## RODDING POINT - 45°

Size	Colour	Qty	Part no.
110mm	O	10	URP1
160mm	O	4	URP2C

Socketed with black cover



## SQUARE RODDING POINT COVER - Spare

Size	Colour	Qty	Part no.
110mm	B	10	URPFSQ

For use with URP1



## SOCKET PLUG

Size	Colour	Qty	Part no.
110mm	O	1	UE40
160mm	O	1	UE60



## ACCESS CAP - Spigot tail

Size	Colour	Qty	Part no.
110mm	O	50	UE42
160mm	O	15	UE62



## PRESSURE PLUG - Push-fit

Size	Colour	Qty	Part no.
110mm	O	135	UE43
160mm	O	30	UE64



## SNAP CAP

Size	Colour	Qty	Part no.
150mm	B	-	SNC6

To convert Quantum 150mm sockets for use with BS EN 1401 pipe



## SPARE RING SEAL 'T' TYPE

Size	Part no.
110mm	SR110T*
160mm	SR160T

To BS EN 681/1, pack of 5pcs

### Key to symbols and colours:

O: Orange W: White B: Black G: Grey Kitemark certified product BBA certified product Adoptable

## 250mm inspection chamber systems

We offer a range of high quality inspection chambers. Adoptable chamber systems are fully compliant with OFWATs Code for Adoption DCG and Building Regulations

All products in the Sewers for Adoption/ OFWAT code of adoption range are marked and are suitable for both adoptable and non-adoptable applications. They are easily identified on site due to their blue snap caps.

Compatible systems for pipe & fitting connections: 110mm and 160mm solid wall drainage & 150mm Quantum sewer structured wall drainage.



## 250MM INSPECTION CHAMBER BASE - Adoptable

Size	Colour	Qty	Part no.
250mm	B	-	UCC250*

110mm connections  
Supplied with 2 blanking plugs  
Max invert depth 2m



## 250MM INSPECTION CHAMBER - Shallow

Size	Colour	Qty	Part no.
250mm	O	-	UCC7

All 110mm socket connections  
Max invert depth 600mm



## 250MM INSPECTION CHAMBER - Shallow

Size	Colour	Qty	Part no.
250mm	O	-	UAC44

45° equal connections  
Includes two socket plugs and profiled insert  
Max invert depth 600mm



## BOTTOM OUTLET CHAMBER BODY

Size	Colour	Qty	Part no.
250mm	O	-	UAC02

90° equal connections  
4 x 110mm upstands, 3 open connections  
Max invert depth 600mm

# Marley Underground

250mm inspection chamber systems



## CHAMBER RISER

Size	Colour	Qty	Part no.
250mm x 375mm	O	-	UAR1

For use with UCC250, UAC44 and UAC02

Includes 250mm seal

For deeper invert depth 225mm Quantum highway pipe and seals can be used



## COVER AND FRAME - Round, PVCu

Size	Colour	Qty	Part no.
250mm	B	-	UCL2

A15, 1.5 tonnes

For use with UCC7, UAC44, UAC02, UAR1 and UG60

Overall frame 298mm, clear opening 211mm



## SPARE RING SEAL

Size	Colour	Qty	Part no.
250mm	B	-	SR250

Optional, to make UCL2 PVCu lid into a sealed unit



## COVER AND FRAME - Square, PVCu

Size	Colour	Qty	Part no.
250mm	B	-	UCL3

A15, 1 tonne

For use with UCC7, UAC44, UAC02, UAR1 and UG60



## COVER AND FRAME - Polypropylene

Size	Colour	Qty	Part no.
250/315mm	B	1	UCL35PAV

3.5 tonnes. Suitable for pedestrian areas/domestic driveways. For use with UCC7, UAC44, UAC02, UAR1 and UG60

Accepts pavours, 390x390x95mm



## LIFTING HANDLE

Size	Colour	Qty	Part no.
40mm	W	10	KP204W

For use with UAC44

315mm inspection chamber system



## 315MM INSPECTION CHAMBER BASE - Adoptable

Size	Colour	Qty	Part no.
315mm	B	-	UCC315**

110mm connections, supplied with 4 blanking plugs  
290mm high

Max invert depth 2m



## CHAMBER RISER

Size	Colour	Part no.
315mm x 270mm	O	UAR4
315mm x 500mm	O	UAR2
315mm x 1m	O	UAR3

Risers include 300mm seal

For deeper invert depth 300mm Quantum highway pipe and seals can be used



## COVER AND FRAME - Ductile iron

Size	Colour	Qty	Part no.
315mm	B	1	UCL315

B125, 12.5 tonnes

Overall frame 340mm, clear opening 250mm



## COVER AND FRAME - Polypropylene

Size	Colour	Qty	Part no.
250/315mm	B	1	UCL23SQ

3.5 tonnes, Domestic driveway loading

438x438mm, clear opening 220-300mm

450mm inspection chamber systems



## 450MM INSPECTION CHAMBER BASE - Adoptable or deep inspection

Size	Colour	Qty	Part no.
450mm	B	-	UCC5**

160 and 110mm socket connections, 400mm high

Size	Colour	Qty	Part no.
450mm	B	-	UCC450**

110mm socket connections, 400mm high

UCC5 and UCC450 max invert depth: Sewers for Adoption (SfA), when used with UCR3 riser - 3m

Non SfA, deep inspection - 4m



## INSPECTION CHAMBER BASE - Shallow

Size	Colour	Qty	Part no.
450mm	B	-	UCC5**

110mm connections, 245mm high

Supplied with 4 blanking plugs

Max invert depth 1.2m



## DEEP INSPECTION CHAMBER RISER

Size	Colour	Qty	Part no.
450mm x 480mm	B	-	UCR3

For use with UCC450 or UCC5

Includes one 450mm seal

# Marley Underground

450mm inspection chamber systems

Key to symbols and colours:

O: Orange W: White B: Black G: Grey  Kitemark certified product  BBA certified product  Adoptable



## DEEP INSPECTION CHAMBER RISER CLIP

Size	Part no.
-	UCC10D

For use with UCR3 riser, pack of 10pcs



## CHAMBER RISER

Size	Colour	Qty	Part no.
450mm x 430mm	B	-	UCR2

For use with UCC3/5 or UCC450

Includes one 450mm seal



## CHAMBER RISER CLIP

Size	Part no.
-	UCC10

For use with UCR2 riser, pack of 10pcs





## SPARE RING SEAL

Size	Colour	Qty	Part no.
450mm 	B	-	SR450

For use with UCR2/3



## INSPECTION CHAMBER INSERT

Type	Size	Colour	Part no.
Left hand 	B	B	UCB1
Right hand 	B	B	UCB2

For use with UCC5 Inspection chamber base



## SPARE BLANKING PLUG

Size	Colour	Qty	Part no.
110mm 	B	70	UCP1
160mm 	B	-	UCP2

For use with UCC3/5 and UCC450



## COVER AND FRAME - Ductile iron

Size	Colour	Qty	Part no.
450mm 	B	1	UCL125

B125, 12.5 tonnes

Overall frame 550mm, clear opening 450mm



## COVER AND FRAME - Ductile iron

Size	Colour	Qty	Part no.
450mm	B	1	UCL35

A15, 3.5 tonnes, Domestic driveway loading

Overall frame 540mm, clear opening 450mm



## REDUCED ACCESS RING - Ductile iron

Size	Qty	Part no.
450mm 	1	UCLRR2

For use with UCL125, reduces access to 350mm

Overall size 460mm, clear opening 350mm

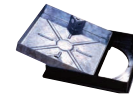


## COVER AND FRAME - Square, Polypropylene

Size	Colour	Qty	Part no.
450mm	B	1	UCL35SQ

3.5 tonnes. Domestic driveway loading

560x560mm, clear opening 450mm



## ACCESS COVER - Square/round

Size	Colour	Qty	Part no.
450mm	B	1	UCL50PAV

5 tonnes, PP frame/ galvanized tray

Suitable for pedestrian areas/domestic driveways, accepts paviers

580x580x95mm



## COVER AND FRAME - Round, Polypropylene

Size	Colour	Qty	Part no.
450mm	B	1	UCL35PP

3.5 tonnes. Domestic driveway loading

Overall frame 550mm, clear opening 450mm



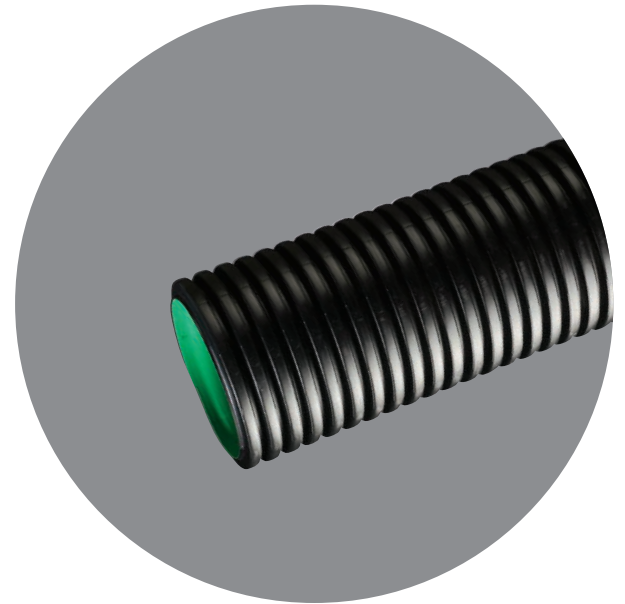
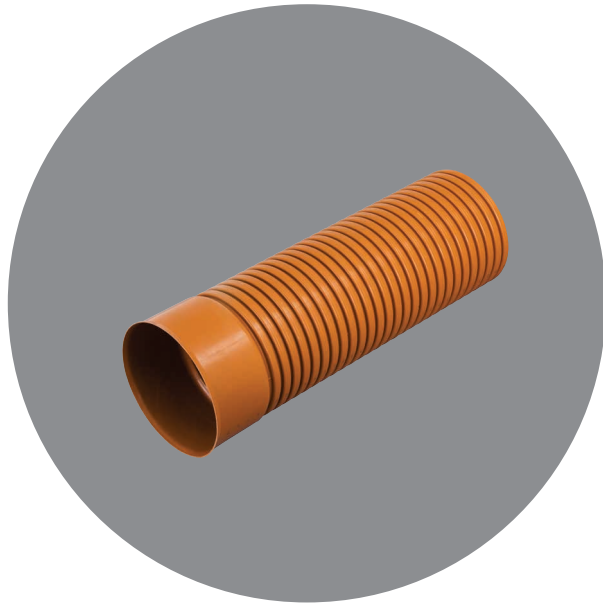
## REDUCED ACCESS RING

Size	Colour	Qty	Part no.
450mm	B	-	UCLRR

For use with UCL50PAV, UCL35PP and UCL35SQ

Provides 350mm restricted opening

# Quantum



# Quantum

Structured wall drainage systems



## QUANTUM SEWER PIPE - Spigot

Size	Colour	Qty	Part no.
150mm x 3m		46	ULS13
150mm x 6m		46	ULS16
225mm x 3m		16	ULS23
300mm x 3m		9	ULS33

Double spigot



## QUANTUM HIGHWAY PIPE - Spigot

Size	Colour	Qty	Part no.
Solid wall			
150mm x 6m		46	ULH16
225mm x 6m		16	ULH26
300mm x 6m		9	ULH36
Half slotted			
150mm x 6m		46	ULSH16
225mm x 6m		16	ULSH26
300mm x 6m		9	ULSH36
Fully slotted			
150mm x 6m		46	ULHH16
225mm x 6m		16	ULHH26
300mm x 6m		9	ULHH36



## QUANTUM SEWER PIPE - Socketed

Size	Colour	Qty	Part no.
150mm x 3m		46	UPST13
150mm x 6m		46	UPST16
225mm x 3m		16	UPS23
225mm x 6m		16	UPS26
300mm x 3m		9	UPS33
300mm x 6m		9	UPS36

Pipe supplied socketed or with coupling and a seal across all sizes



## QUANTUM HIGHWAY PIPE - Socketed

Size	Colour	Qty	Part no.
Solid wall			
150mm x 6m		46	UPH16
225mm x 6m		16	UPH26
300mm x 6m		9	UPH36
Half slotted			
150mm x 6m		46	USH16
225mm x 6m		16	USH26
300mm x 6m		9	USH36
Fully slotted			
150mm x 6m		46	UHH16
225mm x 6m		16	UHH26
300mm x 6m		9	UHH36

Pipe supplied with coupling across all sizes

Slotted pipe - order seals if necessary



## COUPLING - Straight

Size	Colour	Qty	Part no.
150mm		4	UME15Q
225mm		2	UME25
300mm		2	UME35



## COUPLING - Slip

Size	Colour	Qty	Part no.
150mm		4	UME16Q
225mm		2	UME26
300mm		2	UME36



## BEND - 87 1/2°

Size	Colour	Qty	Part no.
150mm		2	UMB19Q
225mm		1	UMB29
300mm		1	UMB39

Double socket



## BEND - 45°

Size	Colour	Qty	Part no.
150mm		2	UMB14Q
225mm		1	UMB24
300mm		1	UMB34

Double socket



## BEND - 30°

Size	Colour	Qty	Part no.
150mm		2	UMB13Q
225mm		2	UMB23
300mm		2	UMB33

Double socket



## BEND - 15°

Size	Colour	Qty	Part no.
150mm		2	UMB11Q
225mm		2	UMB21
300mm		2	UMB31

Double socket



## EQUAL BRANCH - 87 1/2°

Size	Colour	Qty	Part no.
150mm		2	UMY13Q*

All socket



## EQUAL BRANCH - 45°

Size	Colour	Qty	Part no.
150mm		2	UMY11Q*
225mm		1	UMY22
300mm		1	UMY33

All socket

For compatible inspection chambers see page 66 and 67

# Quantum

Structured wall drainage systems



## UNEQUAL BRANCH - 87½°

Size	Colour	Qty	Part no.
150x110mm	○	2	UMY12Q*



## UNEQUAL BRANCH - 45°

Size	Colour	Qty	Part no.
150x110mm	○	2	UMY10Q*
225x110mm	○	-	UMY20
225x150mm	○	-	UMY21*
300x110mm	○	-	UMY30
300x150mm	○	-	UMY31*
300x225mm	○	-	UMY32

To convert 150mm branch to accept 160mm solid wall pipe fit snap cap SNC6 and ring seal SR16OT



## SOCKET PLUG

Size	Colour	Qty	Part no.
150mm	○	2	UMJ11



## END CAP

Size	Colour	Qty	Part no.
150mm	○	2	UMK11
225mm	○	1	UMK21
300mm	○	1	UMK31



## LEVEL INVERT REDUCER

Size	Colour	Qty	Part no.
225x110mm	○	-	UML21
250x110mm	○	-	UML32



## ADAPTOR

Size	Colour	Qty	Part no.
150mm	○	-	UMA45

Quantum/solid wall  
PVC to clayware pipe coupler



## ADAPTOR

Size	Colour	Qty	Part no.
150mm	○	-	UMA17

Quantum socket to solid wall spigot  
PVC to clayware pipe coupler

### Key to symbols and colours:

O: Orange W: White B: Black G: Grey Kitemark certified product BBA certified product Adoptable



## FLEXIBLE COUPLING

Size	Colour	Qty	Part no.
150mm	B	-	UMD17
225mm	B	-	UMD27
300mm	B	-	UMD37

Quantum to clay adaptors  
150mm - 180-200/ 144-160mm  
225mm - 260-285/ 240-250mm  
300mm - 360-385/ 325-335mm



## QUANTUM PIPE SEAL

Size	Colour	Qty	Part no.
150mm	B	-	UMR150
225mm	B	-	UMR225
300mm	B	-	UMR300



## RING SEAL 'T' TYPE

Size	Colour	Qty	Part no.
150mm	B	-	SR160T*

To convert Quantum 150mm sockets for use with BS EN 1401 pipe



## SNAP CAP

Size	Colour	Qty	Part no.
150mm	B	-	SNC6

To convert Quantum 150mm sockets for use with BS EN 1401 pipe



## ROAD GULLY

Size	Colour	Qty	Part no.
150mm	B	-	UMA43

Polyethylene, 90 litres. 760mm deep x 500mm diameter

Size	Colour	Qty	Part no.
150mm	B	-	UMA49

Polyethylene, 112 litres. 920mm deep x 500mm diameter



## RODDING POINT - 45°

Size	Colour	Qty	Part no.
150mm	○	2	URP2Q

Socketed with black cover



## SILICONE LUBRICANT

Size	Part no.
Tub 1kg	UMA41

Water Research Centre Approved

\* Factory fitted snap cap & seal is for 160mm solid wall pipe connections only. For 150mm Quantum pipe connections, remove snap cap & seal and use UMR150 quantum seal on pipe. Please refer to Marley underground design & installation guide for correct jointing procedure. ° Underground terms apply

# Quantum

Large diameter quantum highway



## LARGE DIAMETER HIGHWAY PIPE

Size	Colour	Qty	Part no.
Solid wall			
375mm x 6m	B	1	UPH375*
450mm x 6m	B	1	UPH450*
600mm x 6m	B	1	UPH600
Fully slotted			
375mm x 6m	B	1	UHH375
450mm x 6m	B	1	UHH450
600mm x 6m	B	1	UHH600

Plain ended, order sockets and seals separately



## COUPLING

Size	Colour	Qty	Part no.
375mm	B	1	UME375*
450mm	B	1	UME450*
600mm	B	1	UME600



## SEALING RING

Size	Colour	Qty	Part no.
375mm	B	1	UMR375*
450mm	B	1	UMR450*
600mm	B	1	UMR600*



## BEND - 11.25°

Size	Colour	Qty	Part no.
375mm	B	1	UMB3751
450mm	B	1	UMB4501
600mm	B	1	UMB6001



## BEND - 22.5°

Size	Colour	Qty	Part no.
375mm	B	1	UMB3752
450mm	B	1	UMB4502
600mm	B	1	UMB6002



## BEND - 45°

Size	Colour	Qty	Part no.
375mm	B	1	UMB3754*
450mm	B	1	UMB4504
600mm	B	1	UMB6004



## BEND - 90°

Size	Colour	Qty	Part no.
375mm	B	1	UMB3759
450mm	B	1	UMB4509
600mm	B	1	UMB6009



## BRANCH - 45°

Size	Colour	Qty	Part no.
375x160mm	B	1	UMY3751*
375x250mm	B	1	UMY3752
375x315mm	B	1	UMY3753
375x375mm	B	1	UMY3754
450x160mm	B	1	UMY4501*
450x250mm	B	1	UMY4502
450x315mm	B	1	UMY4503
450x375mm	B	1	UMY4504
450x450mm	B	1	UMY4505
600x160mm	B	1	UMY6001
600x250mm	B	1	UMY6002
600x315mm	B	1	UMY6003
600x375mm	B	1	UMY6004
600x450mm	B	1	UMY6005
600x600mm	B	1	UMY6006

160, 250 and 315mm branch connections are spigot ended and need to be used in conjunction with couplings and seals. For 160mm branch, use UME15C coupling. Remove one snap cap and seal from UME15C to convert to 150mm quantum. The 375, 450 and 600mm branches are all socketed



For compatible inspection chambers see page 66 and 67

## BRANCH - 90°

Size	Colour	Qty	Part no.
375x160mm	B	1	UMT3751
375x250mm	B	1	UMT3752
375x315mm	B	1	UMT3753
375x375mm	B	1	UMT3754
450x160mm	B	1	UMT4501
450x250mm	B	1	UMT4502
450x315mm	B	1	UMT4503
450x375mm	B	1	UMT4504
450x450mm	B	1	UMT4505
600x160mm	B	1	UMT6001
600x250mm	B	1	UMT6002
600x315mm	B	1	UMT6003
600x375mm	B	1	UMT6004
600x450mm	B	1	UMT6005
600x600mm	B	1	UMT6006

## Large diameter quantum highway

- Available in 375mm, 450mm and 600mm Size
- Pipes are available in fully slotted and solid wall options
- Pipe contains a minimum of 70% recycled HDPE material
- Suitable for highway surface water carrier and filter drains
- Light weight, high strength and durable
- Easy to cut to required length
- BBA certificate no. 11/H172



# Quantum

Accessories



## SOLVENT CEMENT

Size	Qty	Part no.
Tub 250ml	1	KS10*



## SOLVENT CEMENT

Size	Qty	Part no.
Tub 500ml BS EN4680	1	KS20*



## SILICONE LUBRICANT

Size	Qty	Part no.
Tube with sponge applicator 50g	1	SZ50*



## SILICONE LUBRICANT

Size	Qty	Part no.
Bottle 100g	1	SZ100*



## SILICONE LUBRICANT

Size	Qty	Part no.
Aerosol † 400ml	1	SZ400*



## SILICONE LUBRICANT

Size	Qty	Part no.
Tub 500g Water Research Centre Approved, 500g	1	SZ500*



## SOLVENT CLEANER

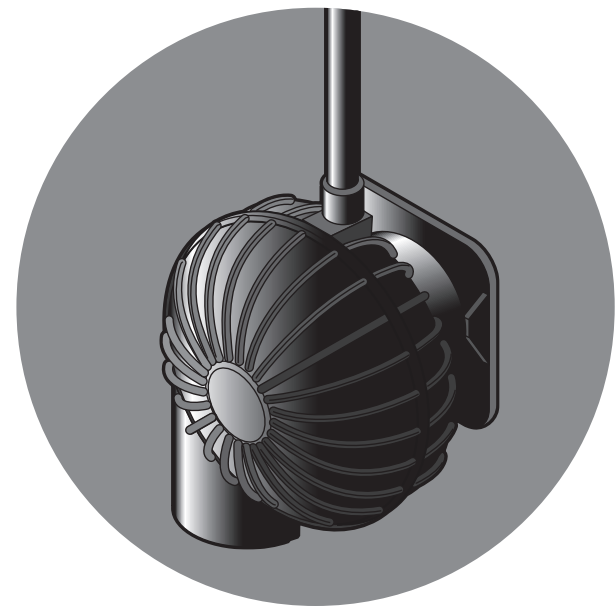
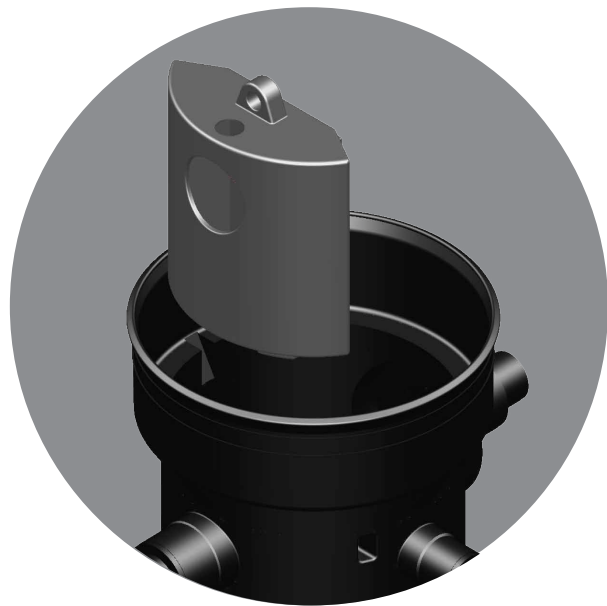
Size	Qty	Part no.
Bottle 250ml	1	KC10

### Key to symbols and colours:

O: Orange W: White B: Black G: Grey Kitemark certified product BBA certified product Adoptable

\*Above ground terms apply † An ozone friendly aerosol

# | Flowloc



# Flowloc

Flowloc control device

## Flowloc

Flowloc is a vortex flow control device. Used as part of an attenuation scheme, Flowloc controls the rate at which water is discharged to a surface water drain or water course

- Accommodates flow rates ranging from 2 l/s to 15 l/s,
- Installed in a chamber base with a withdrawal handle to allow easy access from the surface for maintenance.
- Smart solution for deep installations, suitable for use with tank depths up to 4m.
- The chamber base is also suitable for installation within a conventional man entry inspection chamber, if required.



### FLOWLOC VORTEX FLOW CONTROL UNIT +

Size	Colour	Part no.
40mm	B	USW40
50mm	B	USW50
60mm	B	USW60
70mm	B	USW70
80mm	B	USW80
90mm	B	USW90

Includes flow control unit, chamber base with controller housing, inlet filter and overflow pipe.  
+ Available to order



### ORIFICE PLATE FLOW CONTROL UNIT +

Size	Colour	Part no.
15mm	B	USW415
20mm	B	USW420
25mm	B	USW425
30mm	B	USW430
35mm	B	USW435
40mm	B	USW440
45mm	B	USW445
50mm	B	USW450
55mm	B	USW455
60mm	B	USW460
65mm	B	USW465
70mm	B	USW470
75mm	B	USW475
80mm	B	USW480
85mm	B	USW485

Includes flow control unit, chamber base with controller housing, inlet filter and overflow pipe.  
+ Available to order

#### Key to symbols and colours:

O: Orange W: White B: Black G: Grey Kitemark certified product BBA certified product Adoptable



### SILT TRAP

Size	Colour	Part no.
600mm	B	USW30



### INLET FILTER

Colour	Part no.
B	USW29

Includes lifting chain  
For use with USW30 silt trap



### RISER

Size	Colour	Part no.
600mm x 1m	B	USW301
600mm x 2m	B	USW32
600mm x 3m	B	USW33

Supplied with riser clamp and seal  
For use with flow control devices or USW30 silt trap

# Here to support you and your project



## Let us help you with your project challenges

Our website is packed full of useful product information, calculation tools, BIM and CAD models, training videos and installation guides.

Our experts are also on hand to provide specification advice, on-site support, and details on our bespoke fabrication services.

**To find out more visit:**  
[alixis.co.uk](http://alixis.co.uk)







# Philmac 3G metric/imperial

Compression fittings

Liners to suit PE pipe are required for WRAS approval, please see page 83 for these items.



## METRIC/IMPERIAL JOINER POL X POL

Sizes	Part number
20mm/1/2"	9122
25mm/3/4"	9133
32mm/1"	9144
40mm/1 1/4"	9155
50mm/1 1/2"	9166
63mm/2"	9177



## SLIP JOINER METRIC/IMPERIAL POL X POL – No internal pipe stop, ideal flexibility for repair or retrofit

Sizes	Part number
20mm/1/2"	90122
25mm/3/4"	90133
32mm/1"	90144
40mm/1 1/4"	90155
50mm/1 1/2"	90166
63mm/2"	90177



## METRIC/IMPERIAL REDUCING JOINER POL X POL

Sizes	Part number
25mm/3/4" x 20mm/1/2"	9132
32mm/1" x 20mm/1/2"	9142
32mm/1" x 25mm/3/4"	9143
40mm/1 1/4" x 25mm/3/4"	9153
40mm/1 1/4" x 32mm/1"	9154
50mm/1 1/2" x 25mm/3/4"	9163
50mm/1 1/2" x 32mm/1"	9164
50mm/1 1/2" x 40mm/1 1/4"	9165
63mm/2" x 32mm/1"	9174
63mm/2" x 40mm/1 1/4"	9175
63mm/2" x 50mm/1 1/2"	9176



## END CAP

Sizes	Part number
20mm/1/2"	9029
25mm/3/4"	9039
32mm/1"	9049
40mm/1 1/4"	9059
50mm/1 1/2"	9069
63mm/2"	9079



## METRIC/IMPERIAL END CONNECTOR POL X M.I. BSP

Sizes	Part number
20mm/1/2" x 1/2" BSP	9221
20mm/1/2" x 3/4" BSP	9222
20mm/1/2" x 1" BSP	9223
25mm/3/4" x 1/2" BSP	9231
25mm/3/4" x 3/4" BSP	9232
25mm/3/4" x 1" BSP	9233
32mm/1" x 3/4" BSP	9242
32mm/1" x 1" BSP	9243
32mm/1" x 1 1/4" BSP	9244
32mm/1" x 1 1/2" BSP	9245
40mm/1 1/4" x 1" BSP	9253
40mm/1 1/4" x 1 1/4" BSP	9254
40mm/1 1/4" x 1 1/2" BSP	9255
40mm/1 1/4" x 2" BSP	9256
50mm/1 1/2" x 1 1/2" BSP	9265
50mm/1 1/2" x 2" BSP	9266
63mm/2" x 1 1/2" BSP	9275
63mm/2" x 2" BSP	9276



## METRIC/IMPERIAL END CONNECTOR POL X F.I. BSP

Sizes	Part number
20mm/1/2" x 1/2" BSP	9821
20mm/1/2" x 3/4" BSP	9822
20mm/1/2" x 1" BSP	9823
25mm/3/4" x 1/2" BSP	9831
25mm/3/4" x 3/4" BSP	9832
25mm/3/4" x 1" BSP	9833
32mm/1" x 3/4" BSP	9842
32mm/1" x 1" BSP	9843
32mm/1" x 1 1/4" BSP	9844
40mm/1 1/4" x 1 1/4" BSP	9854
40mm/1 1/4" x 1 1/2" BSP	9855
50mm/1 1/2" x 1 1/2" BSP	9865
50mm/1 1/2" x 2" BSP	9866
63mm/2" x 2" BSP	9876



## METRIC/IMPERIAL TEE - Equal POL X POL

Sizes	Part number
20mm/1/2"	9322
25mm/3/4"	9333
32mm/1"	9344
40mm/1 1/4"	9355
50mm/1 1/2"	9366
63mm/2"	9377

For info on approvals and standards please refer to our website [alixis.co.uk/philmac](http://alixis.co.uk/philmac)



# Philmac 3G metric/imperial

Compression fittings



**SLIP TEE METRIC/IMPERIAL – No internal pipe stop, ideal flexibility for repair or retrofit**

Sizes	Part number
20mm/1/2"	90322
25mm/3/4"	90333
32mm/1"	90344
50mm/1 1/2"	90366
63mm/2"	90377



**METRIC/IMPERIAL TEE – Reducing POL X POL**

Sizes	Part number
25mm/3/4" x 25mm/3/4" x 20mm/1/2"	9332
25mm/3/4" x 25mm/3/4" x 32mm/1"	9334
32mm/1" x 32mm/1" x 25mm/3/4"	9343
50mm/1 1/2" x 50mm/1 1/2" x 25mm/3/4"	9363
50mm/1 1/2" x 50mm/1 1/2" x 32mm/1"	9364
50mm/1 1/2" x 50mm/1 1/2" x 40mm/1 1/4"	9365
63mm/2" x 63mm/2" x 25mm/3/4"	9373
63mm/2" x 63mm/2" x 32mm/1"	9374
63mm/2" x 63mm/2" x 50mm/1 1/2"	9376



**TEE POL X M.I. BSP**

Sizes	Part number
25mm/3/4" x 1/2" BSP	9931
25mm/3/4" x 3/4" BSP	9932



**TEE POL X F.I. BSP**

Sizes	Part number
20mm/1/2" x 1/2" BSP	9421
20mm/1/2" x 3/4" BSP	9422
25mm/3/4" x 1/2" BSP	9431
25mm/3/4" x 3/4" BSP	9432
25mm/3/4" x 1" BSP	9433
32mm/1" x 1/2" BSP	9441
32mm/1" x 3/4" BSP	9442
32mm/1" x 1" BSP	9443
32mm/1" x 1 1/4" BSP	9444
40mm/1 1/4" x 1 1/4" BSP	9454
40mm/1 1/4" x 1 1/2" BSP	9455
50mm/1 1/2" x 1 1/2" BSP	9461
50mm/1 1/2" x 3/4" BSP	9462
50mm/1 1/2" x 1 1/2" BSP	9465
50mm/1 1/2" x 2" BSP	9466
63mm/2" x 2" BSP	9476



**ELBOW POL X POL**

Sizes	Part number
20mm/1/2"	9522
25mm/3/4"	9533
32mm/1"	9544
40mm/1 1/4"	9555
50mm/1 1/2"	9566
63mm/2"	9577



**REDUCING ELBOW POL X POL**

Sizes	Part number
25mm/3/4" x 20mm/1/2"	9532



**ELBOW POL X F.I. BSP**

Sizes	Part number
20mm/1/2" x 1/2" BSP	9621
20mm/1/2" x 3/4" BSP	9622
25mm/3/4" x 1/2" BSP	9631
25mm/3/4" x 3/4" BSP	9632
25mm/3/4" x 1" BSP	9633
32mm/1" x 1" BSP	9643
32mm/1" x 1 1/4" BSP	9644
40mm/1 1/4" x 1 1/4" BSP	9654
40mm/1 1/4" x 1 1/2" BSP	9655
50mm/1 1/2" x 1 1/2" BSP	9665
50mm/1 1/2" x 2" BSP	9666
63mm/2" x 2" BSP	9676

New sizes now available.



**ELBOW POL X M.I. BSP**

Sizes	Part number
20mm/1/2" x 1/2" BSP	9721
25mm/3/4" x 3/4" BSP	9732
32mm/1" x 1" BSP	9743
32mm/1" x 1 1/4" BSP	9744
40mm/1 1/4" x 1" BSP	9753
40mm/1 1/4" x 1 1/4" BSP	9754
40mm/1 1/4" x 1 1/2" BSP	9755
50mm/1 1/2" x 1 1/2" BSP	9765
63mm/2" x 2" BSP	9776



**45 DEG ELBOW POL X POL**

Sizes	Part number
20mm/1/2"	9028
25mm/3/4"	9038
32mm/1"	9048
40mm/1 1/4"	9058
50mm/1 1/2"	9068
63mm/2"	9078

For info on approvals and standards please refer to our website [alixis.co.uk/philmac](http://alixis.co.uk/philmac)

Liners to suit PE pipe are required for WRAS approval, please see page 83 for these items.

# Philmac 3G metric/imperial

Compression fittings



## WALL PLATE ELBOW PLASTIC

Sizes	Part number
20mm/1/2" x 1/2" BSP	9022
25mm/3/4" x 1/2" BSP	9031
25mm/3/4" x 3/4" BSP	9032



## TANK CONNECTOR ASSEMBLY – c/w Seal Washers

Sizes	Part number
25mm/3/4" x 3/4" BSP	9780
32mm/1" x 1" BSP	9781

Other tank connector options available on page XX-XX



## WALL PLATE ELBOW METAL

Sizes	Part number
20mm/1/2" x 1/2" BSP	9228
25mm/3/4" x 3/4" BSP	9229



## HOSE UNION BIB TAP BS6282 CV

Sizes	Part number
DZR 1/2" c/w double check valve	3022
DZR 3/4" c/w double check valve	3033



## ARCTIC ICE RESISTANT BIB TAP

Sizes	Part number
1/2" BSP	8021
3/4" BSP	8022
1" BSP *Water: -20°C	8023

For Arctic Resistance Ball Valves, see page XX



## HOSE UNION TAP CONNECTOR

Sizes	Part number
1/2"	HOSCON 21
3/4" (to suit 8022 only)	HOSCON 22



## METRIC SADDLE

Sizes	Part number
50mm x 25mm/3/4"	90635
63mm x 25mm/3/4"	90735



## FLANGE ADAPTOR Flange to BS 4504

Sizes	Part number
50mm/1 1/2" x 2"	87766
63mm/2" x 2"	87776



## JOINER

Sizes	Part number
20mm/1/2" x 15mm	1321
25mm/3/4" x 15mm	1331
25mm/3/4" x 22mm	1332
32mm/1" x 22mm	1342
32mm/1" x 28mm	1343

Two part assembled to correct torque. Do not tighten further. For connections to pex pipe please refer to pipe manufacturers installation instructions and only use pex liners compatible with the pipe being used.



## ELBOW

Sizes	Part number
20mm/1/2" x 15mm	1521
25mm/3/4" x 15mm	1531
25mm/3/4" x 22mm	1532
32mm/1" x 28mm	2543

Two part assembled to correct torque. Do not tighten further. For connections to pex pipe please refer to pipe manufacturers installation instructions and only use pex liners compatible with the pipe being used.



## METRIC/IMPERIAL STOPCOCK POL X POL

Sizes	Part number
20mm/1/2"	2822
25mm/3/4"	2833
32mm/1"	2844



## METRIC/IMPERIAL STOPCOCK POL x FI

Sizes	Part number
25mm/3/4" x 1/2"	2831
25mm/3/4" x 3/4"	2832
32mm/1" x 3/4"	2842
32mm/1" x 1"	2843



## METRIC/IMPERIAL 1/4 Turn BALL VALVE POL X POL

Sizes	Part number
20mm/1/2" (16mm Nominal Bore)	95272
25mm/3/4" (16mm Nominal Bore)	95372
25mm/3/4" (19.5mm Nominal Bore)	95273
32mm/1" (19.5mm Nominal Bore)	95373

Liners to suit PE pipe are required for WRAS approval, please see page 83 for these items.

For info on approvals and standards please refer to our website [alixis.co.uk/philmac](http://alixis.co.uk/philmac)

# Philmac 3G metric/imperial

Liners & connection kits



## MDPE LINERS EN12201/BS 6572 (below ground) & EN12201/BS 6730 (above ground)

Sizes	Part number
20mm	78002
25mm	78003
32mm	78004
50mm	78006
63mm	78007



## METRIC/IMPERIAL CONNECTION KIT

Sizes	Part number
20mm/1/2"	999002
25mm/3/4"	999003
32mm/1"	999004
40mm/1 1/4"	999005
50mm/1 1/2"	999006
63mm/2"	999007



## METRIC/IMPERIAL NORMAL GAUGE CONNECTION KIT BS 1972 IRS 134

Sizes	Part number
1/2" (fits 3/8" LD and HD)	93012
3/4"	93003
1"	93004
1 1/4"	93005
1 1/2"	93006
2"	93007



## REDUCING SETS – BS 6572/6730 Metric & BS 1972/3284 & IRS 135 Imperial

Sizes	Part number
25mm/3/4" x 20mm/1/2"	98032
32mm/1" x 20mm/1/2"	98042
32mm/1" x 25mm/3/4"	98043
50mm/1 1/2" x 25mm/3/4"	98063
50mm/1 1/2" x 32mm/1"	98064
63mm/2" x 25mm/3/4"	98073
63mm/2" x 32mm/1"	98074
63mm/2" x 50mm/1 1/2"	98076



## NORMAL GAUGE REDUCING SETS

Sizes	Part number
3/4" x 1/2"	93132
1" x 1/2"	93142
1 x 3/4"	93143



## COPPER CONNECTION KIT BS EN 1057 – Connection Kit for copper pipe for above and below ground use

Sizes	Part number
20mm/1/2" x 15mm	86002
25mm/3/4" x 22mm	86003
32mm/1" x 28mm	86004
25mm/3/4" x 15mm	86032

Suitable for single use only. Not suitable for PB or PEX pipe.



## BLANKING PLUG

Sizes	Part number
20mm/1/2"	9128
25mm/3/4"	9138
32mm/1"	9148
40mm/1 1/4"	9158
50mm/1 1/2"	9168
63mm/2"	9178



## METRIC PVC/ABS CONNECTION COLLET

Part no.	Size	Pcks
94202	20mm	10
94203	25mm	10
94204	32mm	10
94205	40mm	1
94206	50mm	1
94207	63mm	1



## IMPERIAL PVC/ABS CONNECTION COLLET/KIT

Part no.	Size	Pcks
94402	1/2" (20mm/1/2" body)	10
94403	3/4" (25mm/3/4" body)	10
94404	1" (32mm/1" body)	10
94405	1 1/4" (40mm/1 1/4" body)	1
94406	1 1/2" (50mm/1 1/2" body)*	1
94407	2" (63mm/2" body)*	1

\* Complete with nut and seal

# Philmac UTC

Compression fittings



## UNIVERSAL TRANSITION JOINER UTC X POL c/w Metric MDPE Liner

Sizes	Part number
15-21mm x 20mm/1/2"	1032
15-21mm x 25mm/3/4"	1033
21-27mm x 20mm/1/2"	1042
21-27mm x 25mm/3/4"	1043
27-34mm x 20mm/1/2"	1052
27-34mm x 25mm/3/4"	1053
27-34mm x 32mm/1"	1054
27-34mm x 40mm/1 1/4"	1055
34-39mm x 32mm/1"	1074
34-39mm x 40mm/1 1/4"	1075
39-43mm x 32mm/1"	1064
39-43mm x 40mm/1 1/4"	1065
47-49mm x 50mm/1 1/2"	1086
47-49mm x 63mm/2"	1087
59-61mm x 63mm/2"	1097



## UNIVERSAL TRANSITION ELBOW UTC X POL c/w Metric MDPE Liner

Sizes	Part number
15-21mm x 25mm/3/4"	1533
21-27mm x 25mm/3/4"	1543
21-27mm x 32mm/1"	1544
27-34mm x 25mm/3/4"	1553
27-34mm x 32mm/1"	1653



## UNIVERSAL TRANSITION DOUBLE ENDED REPAIR JOINER

Sizes	Part number
15-21mm x 15-21mm	1133
21-27mm x 21-27mm	1144
27-34mm x 27-34mm	1155
34-39mm x 34-39mm	1177
39-43mm x 39-43mm	1166
47-49mm x 47-49mm	1188
59-61mm x 59-61mm	1199



## PIPE GAUGE – for use with Universal Transition Coupling

Sizes	Part number
15-34mm	1135
27-43mm	1136
43-63mm	1137



## UNIVERSAL TRANSITION REDUCED REPAIR JOINER

Sizes	Part number
21-27mm x 15-21mm	1143
27-34mm x 21-27mm	1154
27-34mm x 15-21mm	1153
39-43mm x 27-34mm	1165



## UNIVERSAL TRANSITION M.I. END CONNECTOR UTC X M.I. BSP

Sizes	Part number
15-21mm x 1/2" BSP	1231
15-21mm x 3/4" BSP	1232
15-21mm x 1" BSP	1233
21-27mm x 3/4" BSP	1242
21-27mm x 1" BSP	1243
21-27mm x 1 1/4" BSP	1244
27-34mm x 3/4" BSP	1252
27-34mm x 1" BSP	1253
27-34mm x 1 1/4" BSP	1254
27-34mm x 1 1/2" BSP	1255

For info on approvals and standards please refer to our website [alixis.co.uk/philmac](http://alixis.co.uk/philmac)

# Philmac UTC connectors guide

GUIDE ONLY – Actual size dependant on pipe condition

UTC RANGE	15-21mm	21-27mm	27-34mm	34-39mm	39-43mm	47-49mm	59-61mm
PIPE CIRCUMFERENCE	47-66mm	68-85mm	85-107mm	107-122mm	122-135mm	148-154mm	185-192mm
Alkathene	3/8"	1/2"	3/4"	1"	1-1/4"	1-1/2"	2"
Normal Gauge IRS 134	1/2"	3/4"	1"	1-1/4"			
Heavy Gauge IRS 135		1/2"	3/4"	1"			
Copper	15mm	22mm	28mm	35mm	42mm		
Galvanised Iron	3/8"	1/2"	3/4"	1"	1-1/4"	1-1/2"	2"
Stainless Steel	3/8"	1/2"	3/4"	1"	1-1/4"	1-1/2"	2"
Metric ABS/PVC	16 & 20mm	25mm	32mm		40mm		
Imperial ABS/PVC	3/8"	1/2"	3/4"	1"	1-1/4"	1-1/2"	2"
Lead	3/8"	1/2"	3/4"	1-1/4"	1"	1-1/2"	
	5lb (20mm OD)	6lb (21.6mm OD)	9lb (30.6mm OD)	7lb (37.6mm OD)	16lb (41mm OD)	12lb (48mm OD)	
		7lb (23.2mm OD)	11lb (32.8mm OD)				
		9lb (25.4mm OD)					
	1/2"	3/4"	1"		1-1/4"		
	2lb (16mm OD)	4lb (25.2mm OD)	6lb (31mm OD)		9lb (39.2mm OD)		
	4lb (19.2mm OD)	5lb (26.4mm OD)	7lb (31.6mm OD)				

Fitting selection can be made easier with use of the Philmac Pipe Gauge

## Copper

If user does not want to use a UTC the copper needs to be M.I. or F.I. ended so that we can offer a Met/Imp fitting to suit. Same rule applies for 54mm O.D. copper. Use copper compression fitting to adapt to M.I. or F.I. and then use Met/Imp fitting.

## Lead

The general condition of lead pipe can make sizing difficult at top and bottom tolerance. If the recommended UTC is not successful, the next size up or down, depending on fit, should be offered.

# Philmac Large bore PE metric

Fittings range



## JOINER POL X POL

Sizes	Part number
75 mm	8188
90 mm	8199
110 mm	8100



## REDUCING JOINER POL X POL

Sizes	Part number
75mm x 63mm	8187
90mm x 75mm	8198
110mm x 90mm	8109



## END CONNECTOR POL X M.I. BSP

Sizes	Part number
75mm x 2" BSP	8286
75mm x 3" BSP	8288
90mm x 3" BSP	8298
110mm x 4" BSP	8209



## END CONNECTOR

Sizes	Part number
75mm x 2" BSP	8886
90mm x 3" BSP	8898
110mm x 4" BSP	8809



## TEE - Equal POL X POL

Sizes	Part number
75 mm	8388
90 mm	8399
110 mm	8300



## TEE POL X F.I. BSP

Sizes	Part number
75mm x 2" BSP	8486
90mm x 3" BSP	8498
110mm x 4" BSP	8409



## ELBOW POL X POL

Sizes	Part number
75 mm	8588
90 mm	8599
110 mm	8500



## ELBOW POL X F.I. BSP

Sizes	Part number
75mm x 2" BSP	8686
90mm x 3" BSP	8698
110 110mm x 4" BSP	8609



## END CAP

Sizes	Part number
75 mm	8089
90 mm	8099
110 mm	8009



## FLANGE ADAPTOR Flange to BS 4504

Sizes	Part number
90mm x 3"	78798
110mm x 4"	78709

For info on approvals and standards please refer to our website [alixis.co.uk/philmac](http://alixis.co.uk/philmac)

# Philmac stopcock and valves

Ball and back flow prevention



## STOPCOCK POL X POL

Sizes	Part number
20mm/1/2"	2822
25mm/3/4"	2833
32mm/1"	2844



## STOPCOCK POL X FI

Sizes	Part number
25mm/3/4" x 1/2"	2831
25mm/3/4" x 3/4"	2832
32mm/1" x 3/4"	2842
32mm/1" x 1"	2843



## 1/4 TURN BALL VALVE POL X POL

Sizes	Part number	Nominal Bore
20mm/1/2"	95272	16
25mm/3/4"	95372	16
25mm/3/4"	95273	19.5
32mm/1"	95373	19.5



## ARCTIC ICE RESISTANT BALL VALVE

Sizes	Part number	Nominal Bore
1/2"	8031	15
3/4"	8032	20
1"	8033	25



## BALL VALVE F.I. X F.I. BSP

Sizes	Part number	Nominal Bore
3/4" F.I. x 3/4" F.I.	55002	16
1" F.I. x 1" F.I.	55003	19.5
1 1/4" F.I. x 1 1/4" F.I.	55004	26
1 1/2" F.I. x 1 1/2" F.I.	55005	32
2" F.I. x 2" F.I.	55006	40



## BALL VALVE M.I. X M.I. BSP

Sizes	Part number	Nominal Bore
3/4" M.I. x 3/4" M.I.	55402	16
1" M.I. x 1" M.I.	55403	19.5



## AIR RELEASE VALVE M.I. BSP

Sizes	Part number	Nominal Bore
1" BSP	93109	25



## FOOT VALVE F.I. BSP

Sizes	Part number	Nominal Bore
3/4" BSP	58012	22
1" BSP	58013	27
1 1/4" BSP	58014	32
1 1/2" BSP	58015	38
2" BSP	58016	50



## SINGLE CHECK NON RETURN VALVE F.I. BSP X F.I. BSP

Sizes	Part number	Nominal Bore
3/4" F.I. x 3/4" F.I.	58022	22
1" F.I. x 1" F.I.	58023	27
1 1/4" F.I. x 1 1/4" F.I.	58024	32
1 1/2" F.I. x 1 1/2" F.I.	58025	38
2" F.I. x 2" F.I.	58026	50



## DZR DOUBLE CHECK VALVE F.I. BSP X F.I. BSP TO BS 6282 - Back Flow Prevention Category 3

Sizes	Part number	Nominal Bore
1/2" F.I. x 1/2" F.I.	11101	15
3/4" F.I. x 3/4" F.I.	11202	20
1" F.I. x 1" F.I.	11303	25



## GM FI X FI STOPCOCK (BS.5433 TYPE20)

Sizes	Part number
1/2" x 1/2" F.I.	2511
3/4" x 3/4" F.I.	2522
1" x 1" F.I.	2533
1 1/2" x 1 1/2" F.I.	2055
2" x 2" F.I.	2066



Metric/Imperial BSP End Connectors (for these Valves)

## METRIC/IMPERIAL END CONNECTOR POL X M.I. BSP

Sizes	Part number
20mm/1/2" x 1/2" BSP	9221
20mm/1/2" x 3/4" BSP	9222
20mm/1/2" x 1" BSP	9223
25mm/3/4" x 1/2" BSP	9231
25mm/3/4" x 3/4" BSP	9232
25mm/3/4" x 1" BSP	9233
32mm/1" x 3/4" BSP	9242
32mm/1" x 1" BSP	9243
32mm/1" x 1 1/4" BSP	9244
32mm/1" x 1 1/2" BSP	9245
40mm/1 1/4" x 1" BSP	9253
40mm/1 1/4" x 1 1/4" BSP	9254
40mm/1 1/4" x 1 1/2" BSP	9255
40mm/1 1/4" x 2" BSP	9256
50mm/1 1/2" x 1 1/2" BSP	9265
50mm/1 1/2" x 2" BSP	9266
63mm/2" x 1 1/2" BSP	9275
63mm/2" x 2" BSP	9276

Liners to suit PE pipe are required for WRAS requirements, please see page 83 for these items.

For info on approvals and standards please refer to our website [alixis.co.uk/philmac](http://alixis.co.uk/philmac)

# Philmac BSP threaded

Fittings range



## TEE FEMALE

Sizes	Part number
1/2" BSP	4511
3/4" BSP	4522
1" BSP	4533
1 1/4" BSP	4544
1 1/2" BSP	4555
2" BSP	4566



## ELBOW FEMALE

Sizes	Part number
1/2" BSP	4611
3/4" BSP	4622
1" BSP	4633
1 1/4" BSP	4644
1 1/2" BSP	4655
2" BSP	4666



## ELBOW MALE X FEMALE

Sizes	Part number
1/2" x 1/2" BSP	4691
3/4" x 3/4" BSP	4692
1" x 1" BSP	4693
1 1/4" x 1 1/4" BSP	4694
1 1/2" x 1 1/2" BSP	4695
2" x 2" BSP	4696



## PLUG

Sizes	Part number
1/2" BSP	4011
3/4" BSP	4022
1" BSP	4033
1 1/4" BSP	4044
1 1/2" BSP	4055
2" BSP	4066



## BUSH - REDUCING

Sizes	Part number
3/4" x 1/2" BSP	4121
1" x 1/2" BSP	4131
1" x 3/4" BSP	4132
1 1/4" x 1/2" BSP	4141
1 1/4" x 3/4" BSP	4142
1 1/4" x 1" BSP	4143
1 1/2" x 1/2" BSP	4151
1 1/2" x 3/4" BSP	4152
1 1/2" x 1" BSP	4153
1 1/2" x 1 1/4" BSP	4154
2" x 1/2" BSP	4161
2" x 3/4" BSP	4162
2" x 1" BSP	4163
2" x 1 1/4" BSP	4164
2" x 1 1/2" BSP	4165
3" x 2" BSP	4186
4" x 3" BSP	4198



## NIPPLE

Sizes	Part number
1/2" BSP	4211
3/4" BSP	4222
1" BSP	4233
1 1/4" BSP	4244
1 1/2" BSP	4255
2" BSP	4266



## NIPPLE - REDUCING

Sizes	Part number
3/4" x 1/2" BSP	4221
1" x 1/2" BSP	4231
1" x 3/4" BSP	4232
1 1/4" x 1/2" BSP	4241
1 1/4" x 3/4" BSP	4242
1 1/4" x 1" BSP	4243
1 1/2" x 1/2" BSP	4251
1 1/2" x 3/4" BSP	4252
1 1/2" x 1" BSP	4253
1 1/2" x 1 1/4" BSP	4254
2" x 1/2" BSP	4261
2" x 3/4" BSP	4262
2" x 1" BSP	4263
2" x 1 1/4" BSP	4264
2" x 1 1/2" BSP	4265



## SOCKET

Sizes	Part number
1/2" BSP	4311
3/4" BSP	4322
1" BSP	4333
1 1/4" BSP	4344
1 1/2" BSP	4355
2" BSP	4366



## REDUCING SOCKET

Sizes	Part number
3/4" x 1/2" BSP	4321
1" x 1/2" BSP	4331
1" x 3/4" BSP	4332
1 1/4" x 1" BSP	4343
1 1/2" x 3/4" BSP	4352
1 1/2" x 1" BSP	4353
1 1/2" x 1 1/4" BSP	4354
2" x 3/4" BSP	4362
2" x 1" BSP	4363
2" x 1 1/2" BSP	4365

For info on approvals and standards please refer to our website [alixis.co.uk/philmac](http://alixis.co.uk/philmac)



# Philmac BSP threaded

Fittings range



## CAP

Sizes	Part number
1/2" BSP	4901
3/4" BSP	4902
1" BSP	4903
1 1/4" BSP	4904
1 1/2" BSP	4905
2" BSP	4906



## M.I. BSP HOSE TAILS

Sizes	Part number
1/2" BSP	RXHT15
3/4" BSP	RXHT20
1" BSP	RXHT25
1 1/4" BSP	RXHT32
1 1/2" BSP	RXHT40
2" BSP	RXHT50



## IBC SWIVEL-IT ADAPTORS

Sizes	Part number
2" x 3/4" F.I. BSP	60UD075B
2" x 1" F.I. BSP	60UD10B
2" x 2" F.I. BSP	60UD20B

N.B. All threads are BSP tapered. Use PTFE Tape on threads for lubrication purposes. Do not overtighten.



## MALE THREADED TANKCONNECTOR WITH FEMALE INLET

Sizes	Part number
1/2" BSP	RXTTI15
3/4" BSP	RXTTI20
1" BSP	RXTTI25
1 1/4" BSP	RXTTI32
1 1/2" BSP	RXTTI40
2" BSP	RXTTI50



## CUT TO SIZE TANK CONNECTOR KITS (PVC) – Containing long thread (1 ft long), backnuts (2) and a washer

Sizes	Part number
1/2" BSP	TCK050
3/4" BSP	TCK075
1" BSP	TCK100

# Philmac Accessories



## HIGH FLOW BALLCOCK - with or without nut

Sizes	Part no.
3/4" standard thread 25mm tail	RXPTV20
3/4" long thread 45mm tail c/w nut	RXPTV20L
3/4" float valve 165mm lever long thread	70221



## PIPE CUTTER

Sizes	Part no.
Up to 32mm (Medium)	1769
Up to 63mm (Large)	1770



## SPANNER

Sizes	Part no.
20 - 32mm 'Y' spanner (plastic)	702431
20 - 32mm 'Y' spanner (metal)	7024
32 - 63mm 'C' spanner	7047
40 - 63mm 'Y' spanner	7057
50 - 110mm 'C' spanner	7050



## SQUEEZE OFF TOOLS

Sizes	Part number
20-32mm	MINI2032
20-63mm	MIDI2063



## PIPE CLIPS Suitable for MDPE pipe

Sizes	Part number
16mm (oc)	4305
20mm (oc)	4306
25mm (oc)	4307
32mm (cc)	4308
40mm (cc)	4309
50mm (cc)	4310
63mm (cc)	4312
90mm (cc)	4313
110mm (cc)	4314

(oc) openclip, (cc) closedclip.

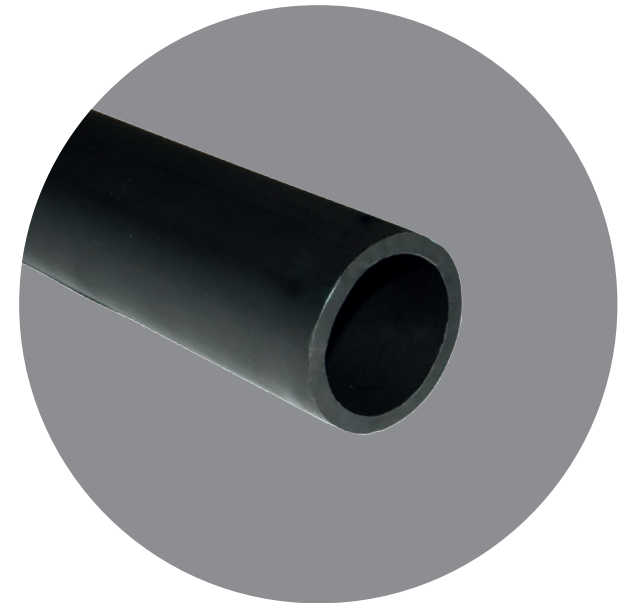
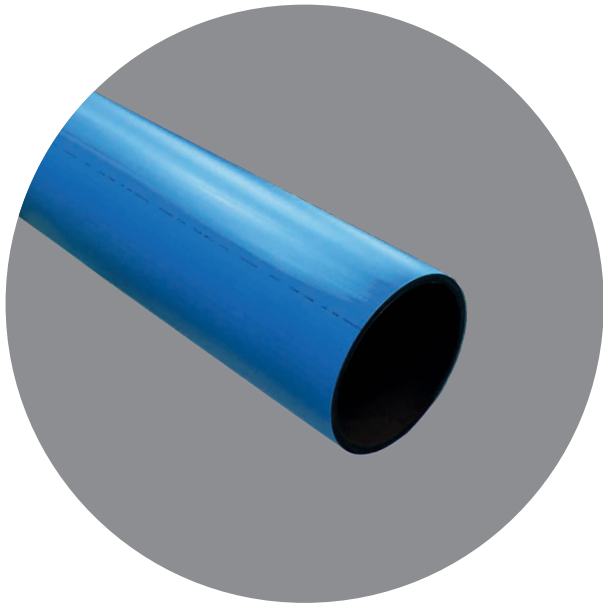


## PIPE REPAIR KITS

Sizes	Part number
Pipe repair kit 20mm	PRK20
Pipe repair kit 25mm	PRK25
Pipe repair kit 32mm	PRK32

N.B. All threads are BSP tapered. Use PTFE Tape on threads for lubrication purposes. Do not overtighten.

# **GPS**



# GPS PE Blue

Pipe for potable water applications



## STICK SDR 11

Size	Length	Product Code
50mm	6m	51 512 310
63mm	6m	51 513 311



## COIL SDR 11

Size	Length	Product Code
20mm	25m	51 558 306
	50m	51 559 306
	100m	51 560 306
	150m	51 561 306
25mm	25m	51 558 307
	50m	51 559 307
	100m	51 560 307
	150m	51 561 307
32mm	25m	51 558 308
	50m	51 559 308
	100m	51 560 308
	150m	51 561 308
50mm	25m	51 558 310
	50m	51 559 310
	100m	51 560 310
	150m	51 561 310
63mm	25m	51 558 311
	50m	51 559 311
	100m	51 560 311
	150m	51 561 311

# GPS PE Blue 3<sup>C</sup> & 3<sup>CTH</sup>

For potable water applications



3<sup>C</sup> - Clean, capped coils for installation without pre-chlorination  
 3<sup>CTH</sup> - Clean, capped coils with towing head for installation without pre-chlorination

## COIL SDR 11

Size	Length	3 <sup>C</sup> Product Code	3 <sup>CTH</sup> Product Code
32mm	50m	51 845 308	-
	100m	51 860 308	-
63mm	50m	51 845 311	51 850 311
	100m	51 860 311	51 852 311

For info on approvals and standards please refer to our website [alifax.co.uk/GPSBlue](http://alifax.co.uk/GPSBlue)

# GPS PE Black

Pipe for raw water and sewage applications



## STICK

SDR 11

Size	Length	Product Code
50mm	6m	50 512 310
63mm	6m	50 513 311



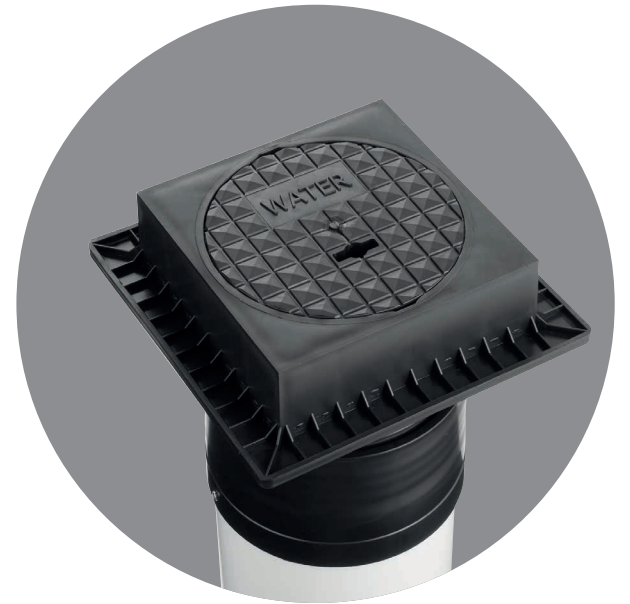
## COIL

SDR 11

Size	Length	Product Code
20mm	25m	50 558 306
	50m	50 559 306
	100m	50 560 306
	150m	50 561 306
25mm	25m	50 558 307
	50m	50 559 307
	100m	50 560 307
	150m	50 561 307
32mm	25m	50 558 308
	50m	50 559 308
	100m	50 560 308
	150m	50 561 308
50mm	25m	50 558 310
	50m	50 559 310
	100m	50 560 310
	150m	50 561 310
63mm	25m	50 558 311
	50m	50 559 311
	100m	50 560 311
	150m	50 561 311

For info on approvals and standards please refer to our website [alixis.co.uk/GPSBlack](http://alixis.co.uk/GPSBlack)

# | Adjusta™ Boundary Box



# Adjusta™ boundary box

Contaminated land/Rigid/Adjusta box



## CONTAMINATED LAND BOX (SEALED)

Part no.	Height (mm)		Lid	Tether	Base	Other
	Min	Max				
LUBA0007	650	870	None	None	Standard	-
LUBA1000	650	870	Water	Tether	Standard	-
LUBA1039	695	985	Water	None	Standard	-
LUBA1043	650	870	None	None	Standard	-
LUBA1048	650	940	Water	None	Standard	Tethered surface box assembly



## ADJUSTA BRASS MANIFOLD (UNSEALED)

Part no.	Height (mm)		Lid	Tether	Base	Other
	Min	Max				
LUBA1052	580	790	None	None	Standard	-
LUBA1068	580	790	Water	None	Standard	-
LUBA1075	580	860	Water	None	Drain	Tethered surface box assembly



## RIGID BRASS MANIFOLD (UNSEALED)

Part no.	Height fixed (mm)	Lid	Tether	Base
LUBA1066	682	None	None	Standard



## RIGID BOX (TAILS)

Part no.	Height fixed (mm)	Lid	Tether	Base
LUBA0012	682	None	None	Standard
LUBA0089	868	None	None	Standard



## RIGID PUSH FIT BOX

Part no.	Height fixed (mm)	Lid	Tether	Base	Other
LUBA0109	682	None	None	Standard	-
LUBA1041	752	Water	Water	Standard	Surface box assembly



## ADJUSTA GUARD TUBE ASSEMBLY

Part no.	Height fixed (mm)	Lid	Base
LUBA1022	650	None	Split Base
LUBA1024	593	None	BM1017



## ADJUSTA BOUNDARY BOX (TAILS)

Part no.	Height (mm)		Lid	Tether	Base	Other
	Min	Max				
LUBA0045	580	790	None	None	Standard	-
LUBA0092	440	590	None	None	Standard	Mini Adjusta
LUBA1001	440	590	Water	Tether	Drain	Mini Adjusta
LUBA1002	580	790	Water	Tether	Drain	-
LUBA1006	580	790	Water	None	Standard	-
LUBA1007	440	590	Water	None	Standard	Mini Adjusta
LUBA1047	580	860	Water	None	Drain	Tethered surface box assembly
LUBA1049	440	660	Water	Tether	Drain	Mini Adjusta + Sq Surface box



## CHAMBER

Part no.	Height (mm)	Lid	Base	Other
LUBA1027	Min = 370 Max = 570	None	No fins BM0120	BA1027 + lid assembly



## ADJUSTA PUSH FIT BOX

Part no.	Height (mm)		Lid	Tether	Base	Other
	Min	Max				
LUBA0099	580	790	None	None	Standard	25mm elbow
LUBA1000	580	790	Water	Tether	Standard	20mm elbow
LUBA1028	440	590	Water	None	Standard	Mini Adjusta
LUBA1037	580	860	Water	Tether	Drain	Surface box assembly
LUBA1038	440	660	Water	None	Drain	Mini Adjusta/surface box assembly
LUBA1040	580	790	Water	Tether	Standard	-
LUBA1044	440	590	Water	None	Standard	Mini Adjusta
LUBA1045	580	790	Water	None	Standard	-
LUBA1082	580	790	Water	Tether	-	Outlet tail



## ADJUSTA ACCESSORIES

Part no.	Height (mm)	Lid	Tether	Other
LUBA1035	Min = 370 Max = 570	Water	Tether	Top Section Only
LUBA1071	Fixed = 440	Water	Tether	Top Section Only/
LUBA1081	Fixed = 440	Water/ No keyhole	Tether	Tethered surface box assembly Adjusta Tube/
LUBA1080	Fixed = 280	Water	Tether	Tethered surface box assembly



# Adjusta™ boundary box

Accessories



## SQUARE COWL

Part no.

LUBA1073



## SURFACE BOX

Part no.	Lid	Tether	Other
LUBA0043	None	None	-
LUBA0056	Water	None	Lid/Plate assembly with keyhole
LUBA0115	Water	None	Location plate with keyhole
LUBA1036	Water	Tether	Lid/Plate assembly with keyhole



## SLOPE ADJUSTA

Part no.

LUBA0018



## CORRUGATED GUARD TUBE ASSEMBLY

Part no.

LUBA0039



## MANIFOLD ASSEMBLY

Part no.

LUBA0016

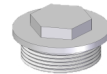
LUBA1067



## TAP ASSEMBLY

Part no.

LUBA0036



## BLANKING CAP + O'RING

Part no.

LUBA0037



## MANIFOLD PLUG NO FLOW KIT

Part no.

LUBA0046



## MANIFOLD PLUG & O-RING KIT

Part no.

LUBA0047



## MANIFOLD PLUG TRICKLE FLOW KIT

Part no.

LUBA0048



## NRV ASSEMBLY

Part no.

LUBA0084



## DCV ASSEMBLY

Part no.

LUBA1076



## ADJUSTA BOX FROST PLUG (185mm)

Part no.

LUBM0123



## RIGID BOX FROST PLUG (195mm)

Part no.

LUBM0055



## LID LIFTING TOOL FOR KEYHOLE

Part no.

LUBM1004



## ADJUSTA LID LIFTING TOOL NONE KEYHOLE

Part no.

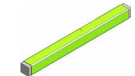
LUBM1036



## PUSH FIT CONNECTOR TOOL

Part no.

LUBM1003



## HEIGHT ADJUSTMENT TOOL

Part no.

LUBM0093



## OUTER SLEEVE ASSY TOOL

Part no.

LUBM1058



## NUT TOOL STOP TAP

Part no.

LUBM1059

# Protecta-Line Adjusta™ boundary box

Boundary boxes/Lids as separate accessories/Accessories



## PROTECTA-LINE ADJUSTA BOUNDARY BOX

Part no.	Height		Lid	Tether	Base	Type
	Min (mm)	Max (mm)				
LUBA001P	570	790	Water	None	Standard	Standard
LUBA002P	660	870	Water	None	Standard	Slope
LUBA003P	570	790	Water	None	Standard	Square cowl
LUBA004P	640	855	Water	Tether	Standard	Surface box



## SLOPE ADJUSTA

Part no.  
LUBA0018



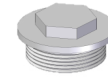
## SQUARE COWL

Part no.  
LUBA1073



## SURFACE BOX

Part no.	Lid	Tether	Other
LUBA0043	None	None	-
LUBA0056	Water	None	Lid/Plate assembly with keyhole
LUBA0115	Water	None	Location plate with keyhole
LUBA1036	Water	Tether	Lid/Plate assembly with keyhole



## BLANKING CAP + O-RING

Part no.  
LUBA0037



## HEIGHT ADJUSTMENT TOOL

Part no.  
LUBM0093



## ADJUSTA BOX FROST PLUG (185mm)

Part no.  
LUBM0123



## LID LIFTING TOOL FOR KEYHOLE

Part no.  
LUBM1004



## ADJUSTA LID LIFTING TOOL NONE KEYHOLE

Part no.  
LUBM1036

# Wait, there's more...



Discover our full portfolio of fluid management solutions with our selection of Aliaxis range guides.

**Available here:**  
[alixaxis.co.uk/en/Downloads](https://alixaxis.co.uk/en/Downloads)



Aliaxis UK reserves the right to modify the details in this publication as products and specifications are updated and improved.

The content of this publication is for general information only and it is user's responsibility to determine the suitability of any product for the purpose intended.

Aliaxis UK Limited, registered in England 01698059. Registered office: Dickley Lane, Lenham, Maidstone, Kent, ME17 2DE

**Aliaxis.co.uk**

Distributor:

Version: V2.12023

